

The City University of New York

FY2020 Third Quarter Financial Report



University Budget Office

June 4, 2020

FY2020 Third-Quarter Financial Report

Executive Summary

- The overall financial outlook is stable for the current year, although the impact of growing costs University wide and lower enrollment at some colleges is increasing the pressure on college budgets and negatively effecting future years' outlook. The COVID 19 pandemic is also impacting the University's finances. Costs related to the health crisis include additional cleaning, protective personal equipment, and needs associated with the shift to distance learning and remote work. At the same time, costs associated with office supplies and travel have decreased. The pandemic is also having an impact on tuition revenue collections as students and their families have lost jobs.
- Expenditures are projected to grow year-over-year by 5%, while revenues are estimated to increase by only 0.4%. Overall enrollment is down 1% compared to the prior year. The colleges are estimated to end the year with \$52 million in reserves.
- The university is working with several colleges on multiyear plans to reduce structural deficits. These include John Jay College, Medgar Evers, College of Staten Island, York and Kingsborough. These plans include hiring restrictions, Other Than Personal Service (OTPS) spending reductions and improved revenue collections. Colleges are also receiving loans as temporary assistance that will enable them to restructure for financial stability.
- Due to continuing declining enrollment, Community colleges are projected to utilize a significant portion of their reserves in order to maintain financial stability in the current year.

Expenditures

Overall, annual expenses are projected to grow by \$113 million, or 5%

- Personal Service expenses are expected to increase by 5% or \$115M year over year. The majority of this increase is due to new collective bargaining agreements.
- OTPS expenses are expected to decrease 1% or \$2M

Revenue

College Revenue collections are projected to grow by 0.4% or \$6M

- Senior College revenue is up 3% or \$28M
- Graduate and Professional Schools revenue is up 12% or \$4M
- Community College revenue is down 7% or \$26M

Enrollment

FTE enrollment is down from fall 2018 to fall 2019 at -1% or 1,996 FTEs

- Senior College FTEs grew by 0.2% or 266 FTEs
- Graduate and Professional Schools FTEs grew by 7% or 373 FTEs
- Community College FTEs experienced a decline of 4% or 2,635 FTEs

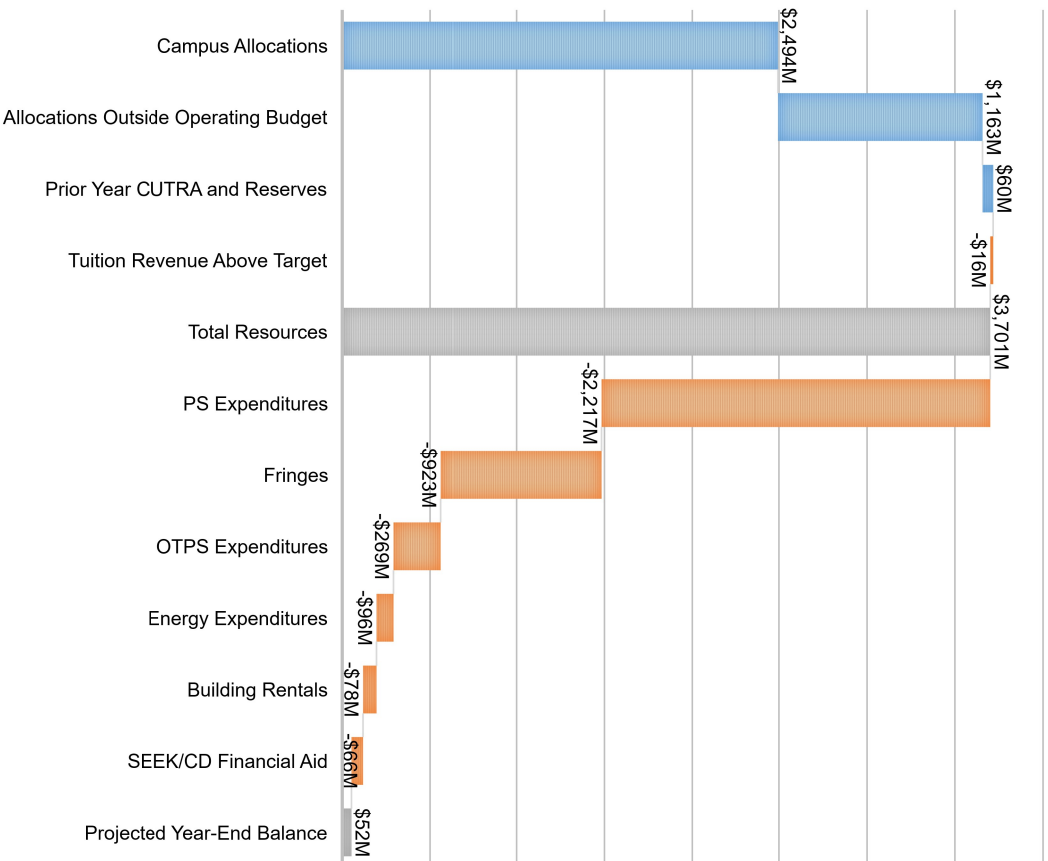
Staffing

University full-time staffing is down 1% or 263 positions; full-time faculty positions have decreased by 158, or 2%

- Senior College staffing is down 2% or 247 positions
- Graduate and Professional Schools staffing is up 10% or 121 positions
- Community College staffing is down 3% or 189 positions

The City University of New York
 2019-2020 Third Quarter Financial Report
 Comparison of Resources to Expenditures
 (\$000)

	Total Resources	Total Expenditures	Projected Year-End Balance
Baruch College	217,081	214,774	2,306
Brooklyn College	220,163	217,383	2,780
City College	265,200	260,720	4,480
Hunter College	287,781	287,665	116
John Jay College	185,701	184,913	788
Lehman College	178,194	165,304	12,890
Medgar Evers College	90,867	92,525	(1,658)
NYC College of Technology	172,007	171,974	32
Queens College	221,059	219,797	1,262
College of Staten Island	163,189	163,169	19
York College	95,463	95,352	111
Senior Colleges Total	2,096,703	2,073,577	23,126
Graduate Center	202,597	200,744	1,854
CUNY School of Law	39,310	37,851	1,459
Newmark School of Journalism	17,127	16,434	693
School of Professional Studies	42,252	33,951	8,301
School of Public Health	22,294	21,066	1,228
School of Labor	10,493	9,571	922
Grad. and Prof. Schools Total	334,072	319,616	14,457
BMCC	267,090	262,964	4,127
Bronx CC	134,999	134,768	231
Guttman CC	34,325	34,317	8
Hostos CC	101,637	98,961	2,676
Kingsborough CC	151,264	153,938	(2,674)
LaGuardia CC	193,256	191,487	1,769
Queensborough CC	162,759	161,559	1,200
Community Colleges Total	1,045,331	1,037,994	7,336
Shared Services	154,086	149,138	4,948
System Administration	46,424	44,879	1,545
University Programs	24,071	23,894	177
University Total	3,700,688	3,649,099	51,589



The City University of New York
2019-2020 Third Quarter Financial Report
Year-End Balance Trend
(\$000)

	Prior Year Actuals	MY Projection	Q3 Projection	Latest Quarter vs Prior Year [\$]	Latest Quarter vs Prior Year [%]
Baruch College	1,031	1,723	2,306	1,275	124%
Brooklyn College	1,937	1,350	2,780	844	44%
City College	5,443	4,182	4,480	(963)	-18%
Hunter College	204	1,130	116	(88)	-43%
John Jay College	1,126	83	788	(338)	-30%
Lehman College	9,614	10,504	12,890	3,276	34%
Medgar Evers College	(2,779)	60	(1,658)	1,121	-40%
NYC College of Technology	859	501	32	(827)	-96%
Queens College	2,951	3,028	1,262	(1,690)	-57%
College of Staten Island	13	95	19	6	44%
York College	(1,963)	152	111	2,074	-106%
Senior Colleges Total	18,437	22,807	23,126	4,689	25%
Graduate Center	3,090	1,552	1,854	(1,236)	-40%
CUNY School of Law	2,273	1,139	1,459	(814)	-36%
Newmark School of Journalism	1,109	994	693	(416)	-38%
School of Professional Studies	8,592	7,947	8,301	(291)	-3%
School of Public Health	515	708	1,228	714	139%
School of Labor	712	420	922	210	30%
Grad. and Prof. Schools Total	16,290	12,761	14,457	(1,834)	-11%
BMCC	8,220	4,415	4,127	(4,093)	-50%
Bronx CC	290	1,086	231	(59)	-20%
Guttman CC	91	533	8	(83)	-91%
Hostos CC	3,526	3,305	2,676	(850)	-24%
Kingsborough CC	1,526	886	(2,674)	(4,200)	-275%
LaGuardia CC	3,284	1,229	1,769	(1,515)	-46%
Queensborough CC	3,433	1,445	1,200	(2,234)	-65%
Community Colleges Total	20,371	12,899	7,336	(13,035)	-64%
Shared Services	9,485	4,242	4,948	(4,537)	-48%
System Administration	2,463	850	1,545	(918)	-37%
University Programs	5,564	121	177	(5,387)	-97%
University Total	72,610	53,681	51,589	(21,021)	-29%

The City University of New York
 2019-2020 Third Quarter Financial Report
 Expenditures Detail
 (\$000)

	PS Regular	Adjuncts	Temporary Services	Total PS	OTPS	Total Campus Based Expenditures	Fringes	Energy	Building Rentals	SEEK/CD Financial Aid	Total
Baruch College	118,944	18,470	3,763	141,177	6,500	147,677	58,352	4,346	2,303	2,096	214,774
Brooklyn College	108,175	19,300	10,637	138,112	9,200	147,312	57,085	8,352	2,885	1,749	217,383
City College	134,343	17,390	8,437	160,170	17,020	177,190	66,202	12,767	2,706	1,856	260,720
Hunter College	143,209	30,782	13,169	187,161	7,870	195,031	77,358	7,822	6,209	1,246	287,665
John Jay College	89,846	19,856	6,799	116,502	6,600	123,102	48,153	4,697	6,758	2,202	184,913
Lehman College	83,524	17,924	4,723	106,171	7,051	113,222	43,883	5,217	937	2,046	165,304
Medgar Evers College	47,654	8,469	3,303	59,426	3,100	62,526	24,562	1,986	477	2,975	92,525
NYC College of Technology	75,942	28,663	3,062	107,667	2,705	110,372	44,501	8,630	3,689	4,783	171,974
Queens College	111,151	20,702	8,038	139,891	7,934	147,825	57,820	6,665	5,319	2,168	219,797
College of Staten Island	81,339	14,600	7,855	103,794	5,730	109,524	42,900	5,705	647	4,392	163,169
York College	48,309	10,350	3,003	61,662	3,711	65,373	25,486	3,058	-	1,434	95,352
Senior Colleges Total	1,042,436	206,506	72,789	1,321,732	77,421	1,399,153	546,303	69,244	31,930	26,947	2,073,577
Graduate Center	85,143	959	20,939	107,041	38,000	145,041	44,243	2,210	-	9,250	200,744
CUNY School of Law	18,710	1,058	1,495	21,263	2,754	24,017	8,789	-	5,008	37	37,851
Newmark School of Journalism	6,425	1,387	604	8,416	1,391	9,806	3,478	-	3,145	4	16,434
School of Professional Studies	12,540	5,144	952	18,636	4,046	22,682	7,703	168	3,387	11	33,951
School of Public Health	11,622	415	697	12,735	651	13,386	5,264	-	2,417	-	21,066
School of Labor	4,573	362	802	5,736	1,463	7,199	2,371	-	-	-	9,571
Grad. and Prof. Schools Total	139,014	9,325	25,488	173,827	48,305	222,132	71,847	2,378	13,957	9,302	319,616
BMCC	109,479	29,389	12,097	150,965	33,837	184,802	64,118	5,841	-	8,203	262,964
Bronx CC	65,996	11,430	5,426	82,852	7,577	90,429	35,189	3,132	-	6,018	134,768
Guttman CC	14,317	1,000	1,870	17,187	9,525	26,712	7,300	306	-	-	34,317
Hosios CC	49,015	7,167	4,476	60,658	8,058	68,716	25,763	2,465	-	2,017	98,961
Kingsborough CC	74,384	14,001	8,197	96,582	7,462	104,044	41,020	5,028	-	3,847	153,938
LaGuardia CC	89,259	21,296	7,867	118,422	14,287	132,709	50,296	3,675	-	4,806	191,487
Queensborough CC	82,805	13,564	6,274	102,643	7,234	109,877	43,594	3,384	-	4,704	161,559
Community Colleges Total	485,255	97,847	46,207	629,309	87,980	717,289	267,280	23,831	-	29,595	1,037,994
Shared Services	55,596	-	6,294	61,890	39,854	101,744	25,581	428	21,385	-	149,138
System Administration	21,121	-	1,123	22,244	5,601	27,845	9,194	154	7,686	-	44,879
University Programs	6,868	-	832	7,700	10,298	17,998	3,183	53	2,660	-	23,894
University Total	1,750,289	313,679	152,734	2,216,702	269,459	2,486,162	923,386	96,089	77,619	65,844	3,649,099

The City University of New York
 2019-2020 Third Quarter Financial Report
 Campus Based Expenditures Trend
 (\$000)

	Prior Year	MY Projection	Q3 Projection	Latest Quarter vs Prior Year	Latest Quarter vs Prior Year
	Actuals			Year [\$]	Year [%]
Baruch College	139,824	150,088	147,677	7,853	6%
Brooklyn College	138,392	147,328	147,312	8,920	6%
City College	166,511	179,459	177,190	10,679	6%
Hunter College	186,086	196,866	195,031	8,944	5%
John Jay College	116,344	125,561	123,102	6,758	6%
Lehman College	105,575	115,398	113,222	7,647	7%
Medgar Evers College	60,263	62,467	62,526	2,263	4%
NYC College of Technology	102,777	110,806	110,372	7,594	7%
Queens College	138,500	147,594	147,825	9,325	7%
College of Staten Island	103,940	110,704	109,524	5,585	5%
York College	60,294	66,415	65,373	5,079	8%
Senior Colleges Total	1,318,506	1,412,686	1,399,153	80,647	6%
Graduate Center	139,449	142,987	145,041	5,592	4%
CUNY School of Law	21,736	24,405	24,017	2,281	10%
Newmark School of Journalism	8,975	9,706	9,806	831	9%
School of Professional Studies	17,456	23,458	22,682	5,226	30%
School of Public Health	11,881	13,652	13,386	1,505	13%
School of Labor	5,788	7,440	7,199	1,411	24%
Grad. and Prof. Schools Total	205,284	221,648	222,132	16,848	8%
BMCC	183,305	190,695	184,802	1,497	1%
Bronx CC	94,903	92,396	90,429	(4,474)	-5%
Guttman CC	26,179	26,592	26,712	533	2%
Hostos CC	69,661	69,586	68,716	(945)	-1%
Kingsborough CC	103,888	104,329	104,044	155	0%
LaGuardia CC	134,134	138,552	132,709	(1,425)	-1%
Queensborough CC	112,714	113,225	109,877	(2,837)	-3%
Community Colleges Total	724,784	735,376	717,289	(7,495)	-1%
Shared Services	86,609	94,631	101,744	15,135	17%
System Administration	25,659	27,449	27,845	2,186	9%
University Programs	12,108	16,988	17,998	5,891	49%
University Total	2,372,950	2,508,779	2,486,162	113,212	5%

The City University of New York
 2019-2020 Third Quarter Financial Report
 Personal Services Expenditures Trend
 (\$000)

	Prior Year			Latest	
	Actuals	MY Projection	Q3 Projection	Quarter vs Prior Year [\$]	Quarter vs Prior Year [%]
Baruch College	133,493	142,888	141,177	7,684	6%
Brooklyn College	128,871	137,801	138,112	9,241	7%
City College	153,629	160,989	160,170	6,541	4%
Hunter College	176,309	187,866	187,161	10,851	6%
John Jay College	108,647	117,961	116,502	7,855	7%
Lehman College	99,000	107,448	106,171	7,171	7%
Medgar Evers College	57,235	58,781	59,426	2,191	4%
NYC College of Technology	99,090	107,706	107,667	8,577	9%
Queens College	131,393	140,260	139,891	8,498	6%
College of Staten Island	97,771	103,979	103,794	6,023	6%
York College	57,428	62,165	61,662	4,234	7%
Senior Colleges Total	1,242,865	1,327,843	1,321,732	78,866	6%
Graduate Center	98,173	106,639	107,041	8,868	9%
CUNY School of Law	18,896	21,551	21,263	2,367	13%
Newmark School of Journalism	7,935	8,415	8,416	481	6%
School of Professional Studies	15,111	19,202	18,636	3,525	23%
School of Public Health	11,178	12,752	12,735	1,557	14%
School of Labor	5,219	5,990	5,736	518	10%
Grad. and Prof. Schools Total	156,513	174,549	173,827	17,314	11%
BMCC	145,891	152,652	150,965	5,074	3%
Bronx CC	85,088	83,159	82,852	(2,236)	-3%
Guttman CC	16,916	17,330	17,187	271	2%
Hostos CC	58,836	59,831	60,658	1,822	3%
Kingsborough CC	94,603	95,226	96,582	1,978	2%
LaGuardia CC	115,725	119,498	118,422	2,698	2%
Queensborough CC	102,458	103,453	102,643	185	0%
Community Colleges Total	619,517	631,148	629,309	9,791	2%
Shared Services	57,546	58,987	61,890	4,344	8%
System Administration	20,293	20,997	22,244	1,951	10%
University Programs	5,079	7,005	7,700	2,621	52%
University Total	2,101,814	2,220,530	2,216,702	114,888	5%

The City University of New York
 2019-2020 Third Quarter Financial Report
 Other Than Personal Services Expenditures Trend
 (\$000)

	Prior Year	MY Projection	Q3 Projection	Latest	Latest
	Actuals			Quarter vs Prior Year [\$]	Quarter vs Prior Year [%]
Baruch College	6,331	7,200	6,500	169	3%
Brooklyn College	9,521	9,527	9,200	(321)	-3%
City College	12,882	18,470	17,020	4,138	32%
Hunter College	9,777	9,000	7,870	(1,907)	-20%
John Jay College	7,697	7,600	6,600	(1,097)	-14%
Lehman College	6,575	7,951	7,051	476	7%
Medgar Evers College	3,028	3,686	3,100	72	2%
NYC College of Technology	3,687	3,100	2,705	(982)	-27%
Queens College	7,108	7,334	7,934	826	12%
College of Staten Island	6,169	6,725	5,730	(438)	-7%
York College	2,866	4,250	3,711	845	29%
Senior Colleges Total	75,641	84,843	77,421	1,780	2%
Graduate Center	41,275	36,348	38,000	(3,275)	-8%
CUNY School of Law	2,839	2,854	2,754	(85)	-3%
Newmark School of Journalism	1,040	1,292	1,391	350	34%
School of Professional Studies	2,345	4,256	4,046	1,701	73%
School of Public Health	702	900	651	(51)	-7%
School of Labor	569	1,450	1,463	894	157%
Grad. and Prof. Schools Total	48,771	47,099	48,305	(466)	-1%
BMCC	37,414	38,043	33,837	(3,577)	-10%
Bronx CC	9,815	9,238	7,577	(2,238)	-23%
Guttman CC	9,262	9,262	9,525	263	3%
Hostos CC	10,825	9,755	8,058	(2,767)	-26%
Kingsborough CC	9,285	9,103	7,462	(1,823)	-20%
LaGuardia CC	18,409	19,055	14,287	(4,122)	-22%
Queensborough CC	10,256	9,772	7,234	(3,022)	-29%
Community Colleges Total	105,266	104,228	87,980	(17,286)	-16%
Shared Services	29,063	35,643	39,854	10,791	37%
System Administration	5,366	6,452	5,601	235	4%
University Programs	7,029	9,983	10,298	3,270	47%
University Total	271,136	288,250	269,459	(1,677)	-1%

The City University of New York
 2019-2020 Third Quarter Financial Report
 Other Than Personal Services Expenditures Projection vs. YTD
 (\$000)

	Current Quarter Projection	Supplies and Materials	Travel	Contractual Services	Equipment Acquisitions	Other OTPS	Total YTD Expenditures	YTD Expenditures as % of Projection
Baruch College	6,500	799	98	2,834	56	-	3,787	58%
Brooklyn College	9,200	1,007	210	4,616	392	25	6,251	68%
City College	17,020	1,126	180	7,417	1,204	10	9,937	58%
Hunter College	7,870	1,474	103	3,807	80	45	5,508	70%
John Jay College	6,600	1,024	136	2,972	307	8	4,447	67%
Lehman College	7,051	624	226	2,355	308	-	3,512	50%
Medgar Evers College	3,100	224	20	1,288	182	260	1,975	64%
NYC College of Technology	2,705	522	61	1,016	111	-	1,710	63%
Queens College	7,934	800	85	2,627	248	-	3,760	47%
College of Staten Island	5,730	690	88	2,157	53	-	2,988	52%
York College	3,711	357	88	1,602	213	-	2,260	61%
Senior Colleges Total	77,421	8,647	1,294	32,691	3,155	349	46,136	60%
Graduate Center	38,000	1,065	390	26,868	872	-	29,196	77%
CUNY School of Law	2,754	138	219	893	207	625	2,082	76%
Newmark School of Journalism	1,391	174	63	409	231	-	878	63%
School of Professional Studies	4,046	171	64	1,424	160	26	1,844	46%
School of Public Health	651	48	54	163	10	197	472	72%
School of Labor	1,463	260	44	416	325	-	1,046	72%
Grad. and Prof. Schools Total	48,305	1,856	835	30,174	1,805	848	35,518	74%
BMCC	33,837	1,708	162	18,862	1,104	1,665	23,501	69%
Bronx CC	7,577	458	47	2,374	117	1,676	4,672	62%
Guttman CC	9,525	266	52	7,000	127	956	8,400	88%
Hostos CC	8,058	553	79	3,999	132	496	5,260	65%
Kingsborough CC	7,462	1,128	118	3,159	157	563	5,125	69%
LaGuardia CC	14,287	1,026	83	7,230	1,286	741	10,365	73%
Queensborough CC	7,234	969	111	2,735	134	1,332	5,281	73%
Community Colleges Total	87,980	6,107	651	45,359	3,058	7,428	62,603	71%
Shared Services	39,854	240	87	19,180	321	588	20,416	51%
System Administration	5,601	390	86	2,521	125	193	3,316	59%
University Programs	10,298	327	96	3,320	5	825	4,572	44%
University Total	269,459	17,568	3,049	133,245	8,469	10,230	172,561	64%

The City University of New York
 2019-2020 Third Quarter Financial Report
 Resources Detail
 (\$000)

	Total Campus Allocations					Allocations					Total
	Fringes	Energy	Building Rentals	SEEK/CD Financial Aid	Operating Budget	Prior Year CUTRA and Reserves	Tuition Revenue Above Target				
Baruch College	147,996	58,352	4,346	2,303	2,096	67,097	1,031	956	217,081		
Brooklyn College	148,992	57,085	8,352	2,885	1,749	70,070	1,937	(836)	220,163		
City College	177,075	66,202	12,767	2,706	1,856	83,530	5,443	(848)	265,200		
Hunter College	193,903	77,358	7,822	6,209	1,246	92,635	204	1,039	287,781		
John Jay College	120,617	48,153	4,697	6,758	2,202	61,811	1,126	2,146	185,701		
Lehman College	114,597	43,883	5,217	937	2,046	52,083	9,614	1,900	178,194		
Medgar Evers College	64,366	24,562	1,986	477	2,975	30,000	-	(3,499)	90,867		
NYC College of Technology	113,041	44,501	8,630	3,689	4,783	61,602	859	(3,496)	172,007		
Queens College	145,630	57,820	6,665	5,319	2,168	71,973	2,951	505	221,059		
College of Staten Island	111,387	42,900	5,705	647	4,392	53,645	13	(1,857)	163,189		
York College	65,377	25,486	3,058	-	1,434	29,979	-	107	95,463		
Senior Colleges Total	1,402,983	546,303	69,244	31,930	26,947	674,424	23,179	(3,883)	2,096,703		
Graduate Center	142,755	44,243	2,210	-	9,250	55,703	3,090	1,050	202,597		
CUNY School of Law	22,147	8,789	-	5,008	37	13,834	2,273	1,056	39,310		
Newmark School of Journalism	9,607	3,478	-	3,145	4	6,628	1,109	(217)	17,127		
School of Professional Studies	20,901	7,703	168	3,387	11	11,268	8,592	1,491	42,252		
School of Public Health	12,517	5,264	-	2,417	-	7,680	515	1,583	22,294		
School of Labor	7,419	2,371	-	-	-	2,371	712	(9)	10,493		
Grad. and Prof. Schools Total	215,345	71,847	2,378	13,957	9,302	97,483	16,290	4,953	334,072		
BMCC	186,888	64,118	5,841	-	8,203	78,162	8,220	(6,179)	267,090		
Bronx CC	93,422	35,189	3,132	-	6,018	44,339	290	(3,052)	134,999		
Guttman CC	26,271	7,300	306	-	-	7,605	91	358	34,325		
Hostos CC	68,112	25,763	2,465	-	2,017	30,245	3,526	(246)	101,637		
Kingsborough CC	103,176	41,020	5,028	-	3,847	49,895	1,526	(3,333)	151,264		
LaGuardia CC	134,730	50,296	3,675	-	4,806	58,777	3,284	(3,535)	193,256		
Queensborough CC	108,863	43,594	3,384	-	4,704	51,682	3,433	(1,220)	162,759		
Community Colleges Total	721,462	267,280	23,831	-	29,595	320,706	20,371	(17,208)	1,045,331		
Shared Services	106,692	25,581	428	21,385	-	47,394	-	-	154,086		
System Administration	29,390	9,194	154	7,686	-	17,034	-	-	46,424		
University Programs	18,175	3,183	53	2,660	-	5,896	-	-	24,071		
University Total	2,494,048	923,386	96,089	77,619	65,844	1,162,937	59,840	(16,138)	3,700,688		

The City University of New York
 2019-2020 Third Quarter Financial Report
 Resources Summary
 (\$000)

	State / City Appropriation	Tuition Revenue	Prior Year CUTRA and Reserves	Total Resources	State / City Appropriation % of Total	Tuition Revenue % of Total	Reserves % of Total
Baruch College	73,258	142,791	1,031	217,081	34%	66%	0%
Brooklyn College	103,870	114,357	1,937	220,163	47%	52%	1%
City College	153,589	106,168	5,443	265,200	58%	40%	2%
Hunter College	125,441	162,136	204	287,781	44%	56%	0%
John Jay College	85,830	98,744	1,126	185,701	46%	53%	1%
Lehman College	82,309	86,271	9,614	178,194	46%	48%	5%
Medgar Evers College	59,276	31,591	-	90,867	65%	35%	0%
NYC College of Technology	86,758	84,390	859	172,007	50%	49%	0%
Queens College	95,229	122,879	2,951	221,059	43%	56%	1%
College of Staten Island	86,539	76,637	13	163,189	53%	47%	0%
York College	53,030	42,433	-	95,463	56%	44%	0%
Senior Colleges Total	1,005,127	1,068,397	23,179	2,096,703	48%	51%	1%
Graduate Center	195,370	4,137	3,090	202,597	96%	2%	2%
CUNY School of Law	27,719	9,318	2,273	39,310	71%	24%	6%
Newmark School of Journalism	13,294	2,724	1,109	17,127	78%	16%	6%
School of Professional Studies	16,830	16,830	8,592	42,252	40%	40%	20%
School of Public Health	15,662	6,117	515	22,294	70%	27%	2%
School of Labor	8,357	1,424	712	10,493	80%	14%	7%
Grad. and Prof. Schools Total	277,232	40,550	16,290	334,072	83%	12%	5%
BMCC	148,864	110,006	8,220	267,090	56%	41%	3%
Bronx CC	96,748	37,961	290	134,999	72%	28%	0%
Gutman CC	29,973	4,261	91	34,325	87%	12%	0%
Hostos CC	71,455	26,656	3,526	101,637	70%	26%	3%
Kingsborough CC	109,464	40,274	1,526	151,264	72%	27%	1%
LaGuardia CC	131,699	58,273	3,284	193,256	68%	30%	2%
Queensborough CC	104,547	54,779	3,433	162,759	64%	34%	2%
Community Colleges Total	692,750	332,210	20,371	1,045,331	66%	32%	2%
Shared Services	154,086	-	-	154,086	100%	0%	0%
System Administration	46,424	-	-	46,424	100%	0%	0%
University Programs	24,071	-	-	24,071	100%	0%	0%
University Total	2,199,690	1,441,157	59,840	3,700,688	59%	39%	2%

Note: Tuition Revenue includes TAP and Pell Awards

The City University of New York
 2019-2020 Third Quarter Financial Report
 Tuition Revenue Detail
 (\$000)

	Revenue Target	YTD Collections	Projection	YTD Collections as a % of Projection		Projection over Target	% Above Target
				Projection	Projection		
Baruch College	141,835	129,500	142,791	91%	956	1%	
Brooklyn College	115,193	102,365	114,357	90%	(836)	-1%	
City College	107,016	96,412	106,168	91%	(848)	-1%	
Hunter College	161,097	144,222	162,136	89%	1,039	1%	
John Jay College	96,598	91,760	98,744	93%	2,146	2%	
Lehman College	84,371	83,603	86,271	97%	1,900	2%	
Medgar Evers College	35,090	27,507	31,591	87%	(3,499)	-10%	
NYC College of Technology	87,886	74,794	84,390	89%	(3,496)	-4%	
Queens College	122,374	109,835	122,879	89%	505	0%	
College of Staten Island	78,494	68,602	76,637	90%	(1,857)	-2%	
York College	42,326	38,287	42,433	90%	107	0%	
Senior Colleges Total	1,072,279	966,886	1,068,397	90%	(3,883)	0%	
Graduate Center	2,995	4,257	4,137	103%	1,142	38%	
CUNY School of Law	8,262	8,392	9,318	90%	1,056	13%	
Newmark School of Journalism	2,941	2,848	2,724	105%	(217)	-7%	
School of Professional Studies	15,339	15,040	16,830	89%	1,491	10%	
School of Public Health	4,534	5,581	6,117	91%	1,583	35%	
School of Labor	1,433	1,470	1,424	103%	(9)	-1%	
Grad. and Prof. Schools Total	35,505	37,589	40,550	93%	5,045	14%	
BMCC	116,185	99,741	110,006	91%	(6,179)	-5%	
Bronx CC	41,013	36,076	37,961	95%	(3,052)	-7%	
Guttman CC	3,903	4,277	4,261	100%	358	9%	
Hostos CC	26,902	24,500	26,656	92%	(246)	-1%	
Kingsborough CC	43,607	36,189	40,274	90%	(3,333)	-8%	
LaGuardia CC	61,808	49,061	58,273	84%	(3,535)	-6%	
Queensborough CC	55,999	50,543	54,779	92%	(1,220)	-2%	
Community Colleges Total	349,418	300,387	332,210	90%	(17,208)	-5%	
University Total	1,457,203	1,304,861	1,441,157	91%	(16,046)	-1%	

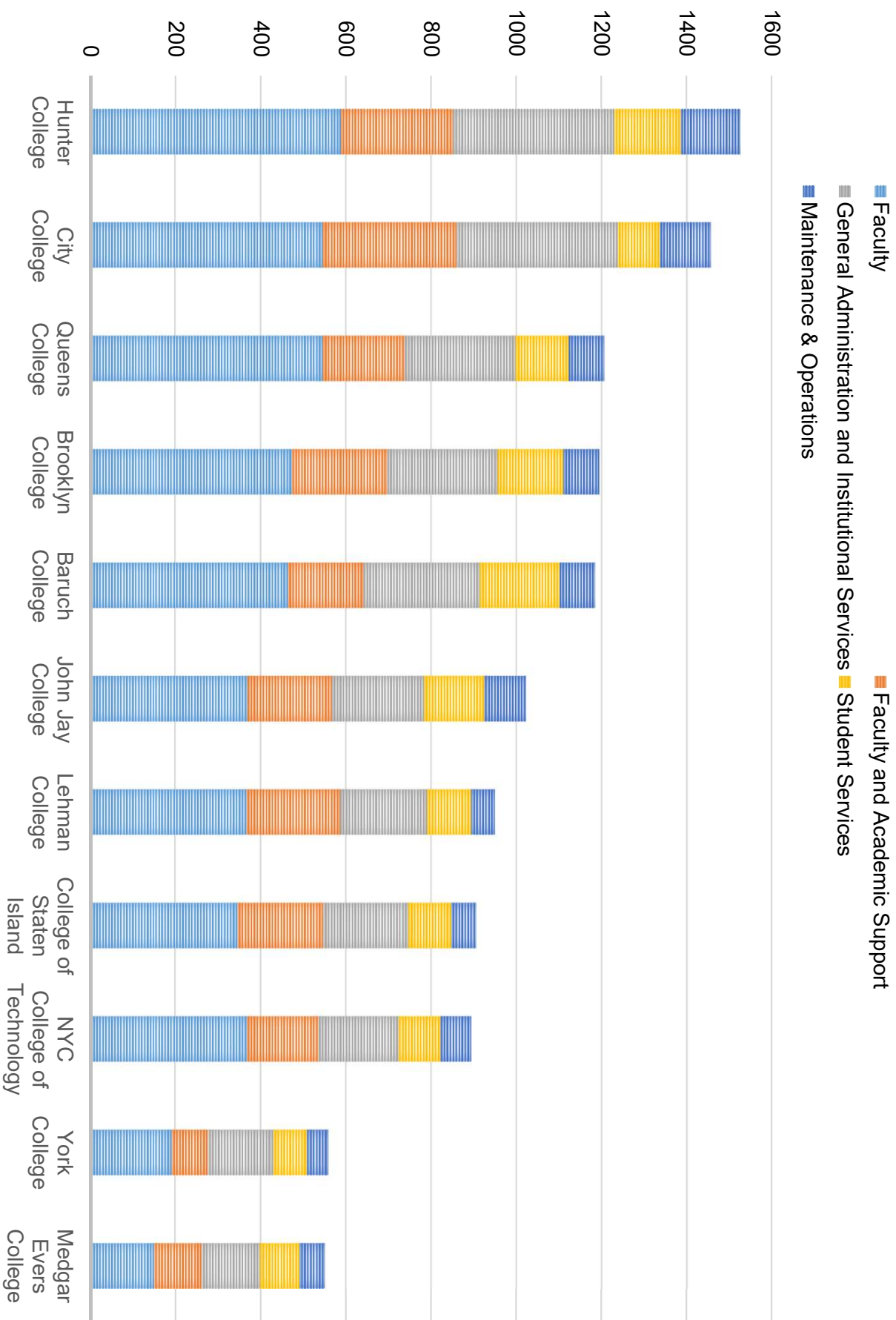
The City University of New York
 2019-2020 Third Quarter Financial Report
 Tuition Revenue Trend
 (\$000)

	Prior Year			Latest Quarter vs		Latest Quarter vs	
	Actuals	MY Projection	Q3 Projection	Prior Year [\$]	Prior Year [%]	Prior Year [%]	Prior Year [%]
Baruch College	135,730	144,804	142,791	7,061	5%		
Brooklyn College	110,614	113,616	114,357	3,743	3%		
City College	102,304	109,349	106,168	3,864	4%		
Hunter College	158,293	163,554	162,136	3,843	2%		
John Jay College	94,562	99,242	98,744	4,182	4%		
Lehman College	82,315	86,583	86,271	3,956	5%		
Medgar Evers College	32,832	31,890	31,591	(1,240)	-4%		
NYC College of Technology	84,560	85,890	84,390	(170)	0%		
Queens College	119,854	124,059	122,879	3,025	3%		
College of Staten Island	77,298	76,530	76,637	(661)	-1%		
York College	42,047	42,868	42,433	386	1%		
Senior Colleges Total	1,040,409	1,078,384	1,068,397	27,988	3%		
Graduate Center	3,230	4,210	4,137	907	28%		
CUNY School of Law	7,905	9,484	9,318	1,413	18%		
Newmark School of Journalism	2,940	2,990	2,724	(216)	-7%		
School of Professional Studies	16,400	17,317	16,830	430	3%		
School of Public Health	4,539	6,024	6,117	1,578	35%		
School of Labor	1,198	1,417	1,424	226	19%		
Grad. and Prof. Schools Total	36,213	41,443	40,550	4,337	12%		
BMCC	116,270	112,885	110,006	(6,264)	-5%		
Bronx CC	40,755	39,179	37,961	(2,794)	-7%		
Guttman CC	4,308	4,646	4,261	(48)	-1%		
Hostos CC	28,768	26,863	26,656	(2,112)	-7%		
Kingsborough CC	45,803	43,102	40,274	(5,529)	-12%		
LaGuardia CC	62,859	60,413	58,273	(4,585)	-7%		
Queensborough CC	59,688	56,690	54,779	(4,909)	-8%		
Community Colleges Total	358,450	343,778	332,210	(26,240)	-7%		
University Total	1,435,071	1,463,605	1,441,157	6,086	0%		

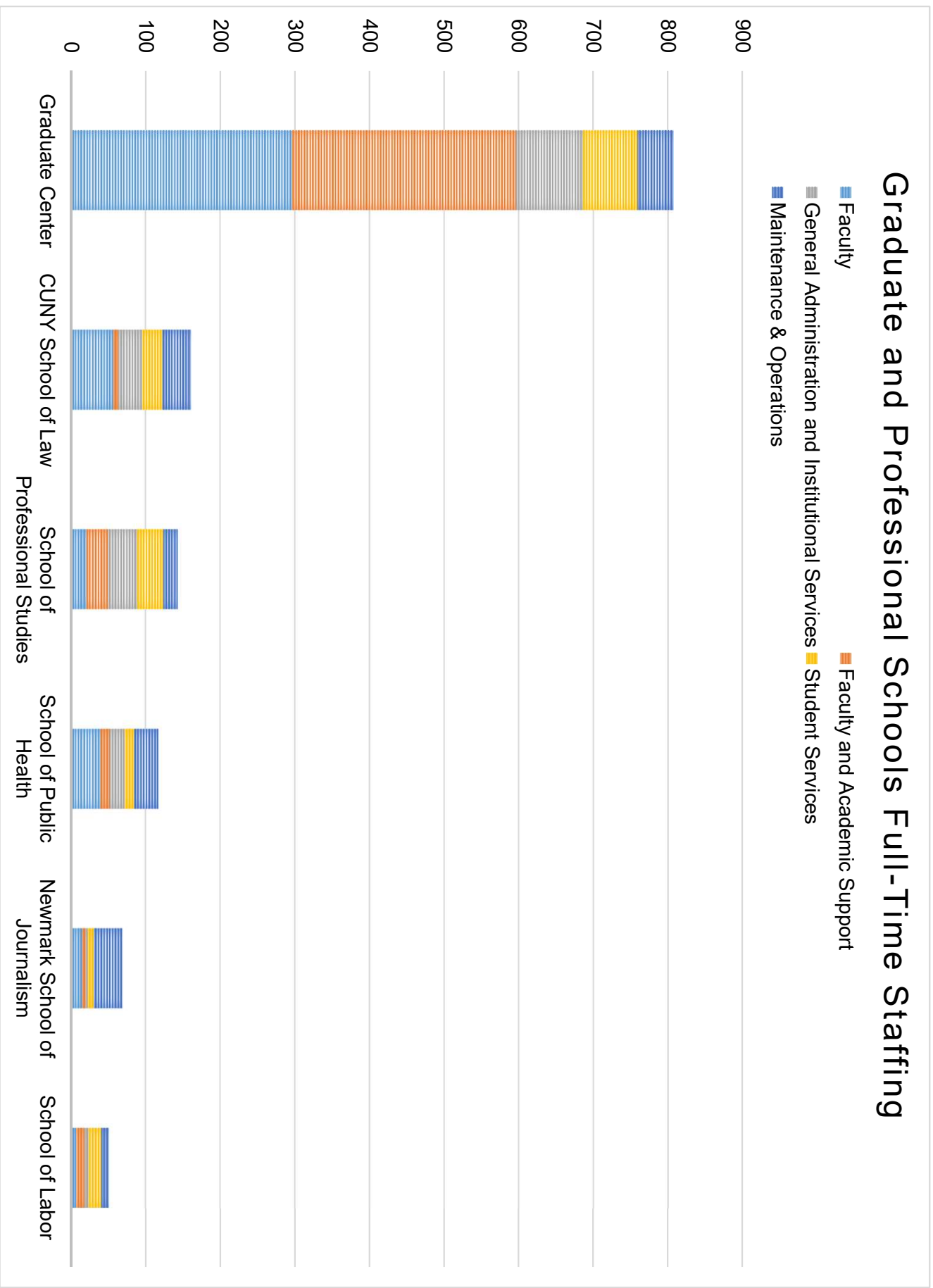
The City University of New York
 2019-2020 Third Quarter Financial Report
 Full-Time Staffing Details

	Faculty Teaching	Faculty Support	Academic Support	Student Services	Maintenance & Operations	General Administration	General Institutional Services	SEEK/CD	Total
Baruch College	464	149	29	176	119	83	154	11	1,185
Brooklyn College	473	170	54	145	124	84	135	9	1,194
City College	546	265	49	96	180	119	199	2	1,456
Hunter College	589	196	67	150	175	140	203	6	1,526
John Jay College	370	154	43	131	90	98	127	10	1,023
Lehman College	368	170	49	93	109	56	95	10	950
Medgar Evers College	151	77	35	84	65	59	71	9	551
NYC College of Technology	369	122	45	93	87	71	101	6	894
Queens College	546	137	55	115	133	83	127	10	1,206
College of Staten Island	347	177	23	94	101	58	99	7	906
York College	192	66	19	70	65	50	88	9	559
Senior Colleges Total	4,416	1,683	468	1,247	1,248	901	1,399	89	11,451
Graduate Center	296	136	164	73	4	48	86	-	807
CUNY School of Law	57	2	5	27	2	38	30	-	161
Newmark School of Journalism	16	2	2	8	-	38	3	-	69
School of Professional Studies	21	29	-	35	7	19	32	-	143
School of Public Health	40	4	8	13	5	32	15	-	117
School of Labor	8	6	5	17	-	10	5	-	51
Grad. and Prof. Schools Total	438	179	184	173	18	185	171	-	1,348
BMCC	580	178	46	173	130	78	162	8	1,355
Bronx CC	290	126	44	101	83	60	116	6	826
Guthman CC	51	5	6	40	3	27	23	-	155
Hostos CC	201	95	30	102	66	57	83	5	639
Kingsborough CC	337	164	32	90	118	64	102	7	914
LaGuardia CC	357	112	105	187	50	87	169	7	1,074
Queensborough CC	409	176	30	111	91	52	111	6	986
Community Colleges Total	2,225	856	293	804	541	425	766	39	5,949
Shared Services	-	-	33	145	-	329	239	-	746
System Administration	-	-	39	26	17	75	21	-	178
University Programs	-	-	80	-	-	-	-	6	86
University Total	7,079	2,718	1,097	2,395	1,824	1,915	2,596	134	19,758

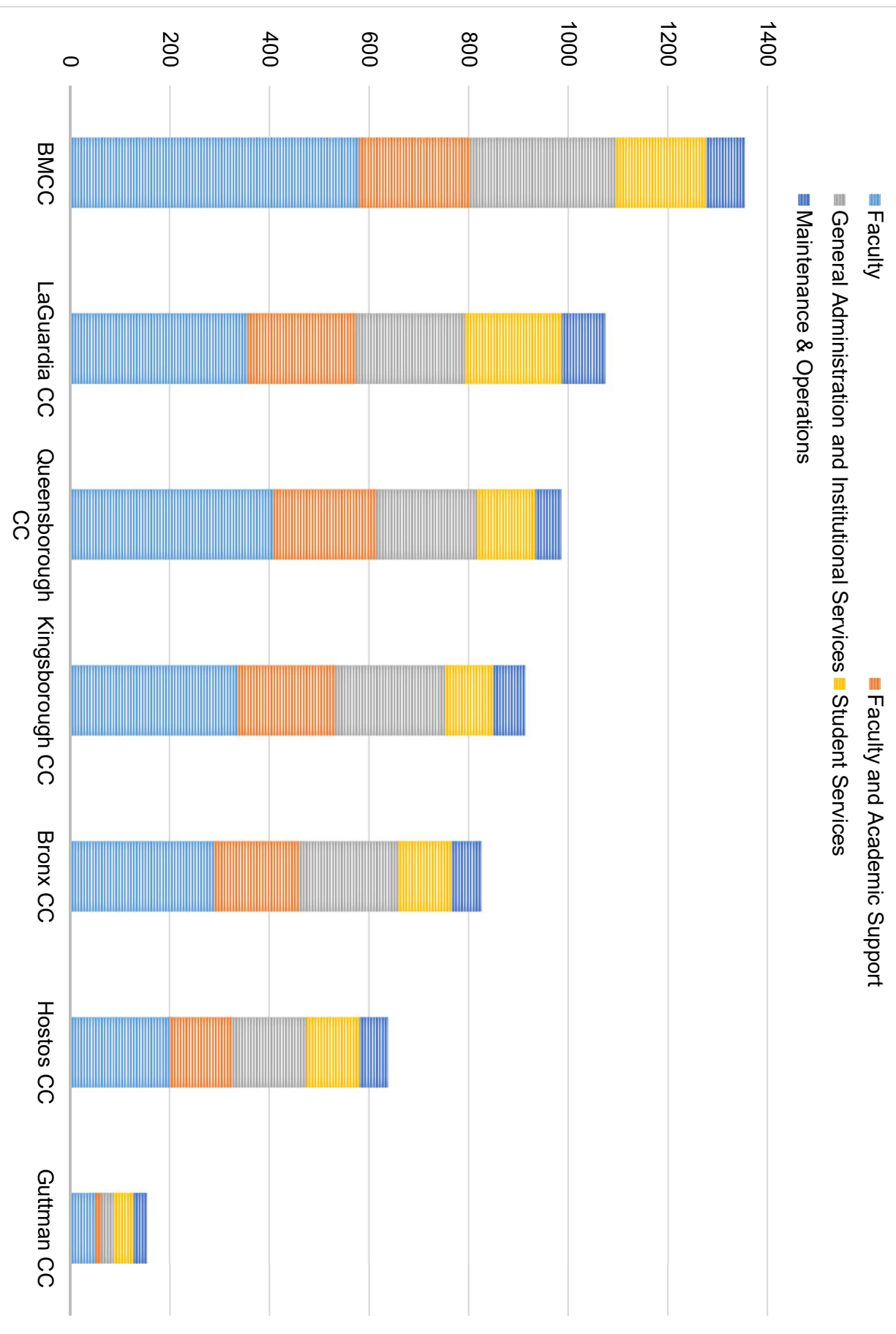
Senior Colleges Full-Time Staffing



Graduate and Professional Schools Full-Time Staffing



Community Colleges Full-Time Staffing



The City University of New York
2019-2020 Third Quarter Financial Report
Full-Time Staffing Trend

	Fall 2018	Fall 2019	Spring 2020	Spring 2020		Spring 2020	
				vs. Fall 2018	vs. Fall 2018 [%]	vs. Fall 2019	vs. Fall 2019 [%]
Baruch College	1,224	1,182	1,185	(39)	-3%	3	0%
Brooklyn College	1,214	1,206	1,194	(20)	-2%	(12)	-1%
City College	1,437	1,419	1,456	19	1%	37	3%
Hunter College	1,579	1,510	1,526	(53)	-3%	16	1%
John Jay College	994	1,002	1,023	29	3%	21	2%
Lehman College	966	944	950	(16)	-2%	6	1%
Medgar Evers College	583	569	551	(32)	-5%	(18)	-3%
NYC College of Technology	930	906	894	(36)	-4%	(12)	-1%
Queens College	1,229	1,213	1,206	(23)	-2%	(7)	-1%
College of Staten Island	953	907	906	(47)	-5%	(1)	0%
York College	589	572	559	(30)	-5%	(13)	-2%
Senior Colleges Total	11,698	11,431	11,451	(247)	-2%	20	0%
Graduate Center	760	805	807	47	6%	2	0%
CUNY School of Law	139	156	161	22	16%	5	3%
Newmark School of Journalism	73	71	69	(4)	-5%	(2)	-3%
School of Professional Studies	114	133	143	29	25%	10	8%
School of Public Health	100	108	117	17	17%	9	8%
School of Labor	41	53	51	10	24%	(2)	-4%
Grad. and Prof. Schools Total	1,227	1,326	1,348	121	10%	22	2%
BMCC	1,352	1,347	1,355	3	0%	8	1%
Bronx CC	903	845	826	(77)	-9%	(19)	-2%
Guttman CC	165	158	155	(10)	-6%	(3)	-2%
Hostos CC	640	594	639	(1)	0%	45	8%
Kingsborough CC	928	915	914	(14)	-2%	(1)	0%
LaGuardia CC	1,119	1,094	1,074	(45)	-4%	(20)	-2%
Queensborough CC	1,031	991	986	(45)	-4%	(5)	-1%
Community Colleges Total	6,138	5,944	5,949	(189)	-3%	5	0%
Shared Services	727	728	746	19	3%	18	2%
System Administration	171	182	178	7	4%	(4)	-2%
University Programs	60	83	86	26	43%	3	4%
University Total	20,021	19,694	19,758	(263)	-1%	64	0%

The City University of New York
2019-2020 Third Quarter Financial Report
Full-Time Faculty Trend

	Fall 2018	Fall 2019	Spring 2020	vs. Fall 2018	vs. Fall 2018 [%]	vs. Fall 2019	vs. Fall 2019 [%]
Baruch College	480	469	464	(16)	-3%	(5)	-1%
Brooklyn College	493	482	473	(20)	-4%	(9)	-2%
City College	549	536	546	(3)	0%	10	2%
Hunter College	613	591	589	(24)	-4%	(2)	0%
John Jay College	378	370	370	(8)	-2%	-	0%
Lehman College	357	366	368	11	3%	2	1%
Medgar Evers College	160	156	151	(9)	-6%	(5)	-3%
NYC College of Technology	396	378	369	(27)	-7%	(9)	-2%
Queens College	558	551	546	(12)	-2%	(5)	-1%
College of Staten Island	366	354	347	(19)	-5%	(7)	-2%
York College	194	193	192	(2)	-1%	(1)	-1%
Senior Colleges Total	4,544	4,447	4,416	(128)	-3%	(31)	-1%
Graduate Center	292	295	296	4	2%	1	0%
CUNY School of Law	47	53	57	10	21%	4	8%
Newmark School of Journalism	17	15	16	(1)	-6%	1	7%
School of Professional Studies	17	22	21	4	24%	(1)	-5%
School of Public Health	44	40	40	(4)	-9%	-	0%
School of Labor	6	6	8	2	33%	2	33%
Grad. and Prof. Schools Total	423	431	438	15	4%	7	2%
BMCC	576	574	580	4	1%	6	1%
Bronx CC	313	302	290	(23)	-7%	(12)	-4%
Guttman CC	53	51	51	(2)	-4%	-	0%
Hostos CC	198	190	201	3	2%	11	6%
Kingsborough CC	347	341	337	(10)	-3%	(4)	-1%
LaGuardia CC	364	359	357	(7)	-2%	(2)	-1%
Queensborough CC	419	407	409	(10)	-2%	2	0%
Community Colleges Total	2,270	2,224	2,225	(45)	-2%	1	0%
Shared Services	-	-	-	-	n/a	-	n/a
System Administration	-	-	-	-	n/a	-	n/a
University Programs	-	-	-	-	n/a	-	n/a
University Total	7,237	7,102	7,079	(158)	-2%	(23)	0%

The City University of New York
2019-2020 Third Quarter Financial Report
FTE Enrollment Trend

	Fall 2017	Fall 2018	Fall 2019	vs. Fall 2017	vs. Fall 2017 [%]	vs. Fall 2018	vs. Fall 2018 [%]
Baruch College	14,420	14,314	15,069	649	5%	755	5%
Brooklyn College	13,774	14,125	14,099	325	2%	(26)	0%
City College	12,419	12,578	12,590	171	1%	12	0%
Hunter College	17,700	18,113	18,080	380	2%	(33)	0%
John Jay College	11,689	12,296	12,770	1,081	9%	474	4%
Lehman College	9,754	10,400	10,650	896	9%	250	2%
Medgar Evers College	5,288	5,198	4,587	(701)	-13%	(611)	-12%
NYC College of Technology	13,019	12,748	12,502	(517)	-4%	(246)	-2%
Queens College	15,309	15,424	15,589	280	2%	165	1%
College of Staten Island	11,127	11,127	10,646	(481)	-4%	(481)	-4%
York College	5,986	6,094	6,101	115	2%	7	0%
Senior Colleges Total	130,485	132,417	132,683	2,198	2%	266	0%
Graduate Center	2,902	2,747	2,778	(124)	-4%	31	1%
CUNY School of Law	530	630	670	140	26%	40	6%
Newmark School of Journalism	251	279	282	31	12%	3	1%
School of Professional Studies	1,422	1,439	1,634	212	15%	195	14%
School of Public Health	344	364	482	138	40%	118	32%
School of Labor	-	150	136	136	n/a	(14)	-9%
Grad. and Prof. Schools Total	5,449	5,609	5,982	533	10%	373	7%
BMCC	20,299	19,884	19,680	(619)	-3%	(204)	-1%
Bronx CC	7,939	7,514	7,025	(914)	-12%	(489)	-7%
Guttman CC	1,179	1,025	1,129	(50)	-4%	104	10%
Hostos CC	5,013	5,115	4,709	(304)	-6%	(406)	-8%
Kingsborough CC	10,706	10,243	10,225	(481)	-4%	(18)	0%
LaGuardia CC	14,161	13,913	13,152	(1,009)	-7%	(761)	-5%
Queensborough CC	10,631	10,674	9,813	(818)	-8%	(861)	-8%
Community Colleges Total	69,928	68,368	65,733	(4,195)	-6%	(2,635)	-4%
University Total	205,862	206,394	204,398	(1,464)	-1%	(1,996)	-1%

The City University of New York
 2019-2020 Third Quarter Financial Report
 Technology Fee Summary (\$000)

	Initial Balance			Revenue Projections	Expenditure Projections	(Over) / Under Expenditures	Year-to-date Revenue	Year-to-date Expenditures	(Over) / Under Expenditures
	7/1/2017	7/1/2018	7/1/2019						
Baruch College	1,931	543	1,661	4,000	4,307	(307)	4,072	3,205	867
Brooklyn College	895	1,455	1,935	3,878	5,104	(1,225)	3,550	2,174	1,377
City College	1,778	1,611	1,984	3,139	4,303	(1,164)	3,204	2,319	885
Hunter College	5,387	59	1,576	4,527	4,585	(58)	4,742	3,537	1,205
John Jay College	1,860	1,979	2,648	3,369	3,860	(491)	3,232	1,890	1,342
Lehman College	1,395	918	1,308	3,000	3,350	(350)	2,953	2,019	933
Medgar Evers College	280	348	482	1,250	1,706	(456)	1,189	792	398
NYC College of Technology	1,122	788	1,172	3,000	3,000	-	2,791	1,755	1,036
Queens College	1,967	2,468	1,406	4,271	5,074	(803)	4,074	3,915	159
College of Staten Island	38	259	1,129	2,499	2,687	(188)	2,776	1,883	893
York College	318	31	351	1,652	2,003	(351)	1,504	852	651
Senior Colleges Total	16,971	10,460	15,653	34,585	39,978	(5,392)	34,086	24,340	9,746
Graduate Center	108	139	239	755	865	(110)	751	291	459
CUNY School of Law	223	18	374	137	187	(50)	138	46	92
Newmark School of Journalism	57	83	106	41	61	(20)	41	28	14
School of Professional Studies	595	835	1,215	542	688	(146)	558	514	44
School of Public Health	77	100	110	130	140	(10)	121	55	66
School of Labor	-	-	40	25	-	25	43	-	43
Grad. and Prof. Schools Total	1,061	1,175	2,084	1,630	1,941	(311)	1,653	934	719
BMCC	1,659	2,314	3,038	5,529	6,692	(1,162)	4,385	4,055	331
Bronx CC	723	750	284	2,000	2,000	-	1,486	398	1,089
Guttman CC	13	57	18	-	-	-	162	145	17
Hostos CC	144	0	39	1,381	1,381	-	1,217	510	706
Kingsborough CC	778	417	163	2,138	2,138	-	1,479	707	772
LaGuardia CC	159	(159)	450	2,650	2,650	-	2,159	1,156	1,004
Queensborough CC	834	274	272	2,477	2,477	-	2,338	1,639	699
Community Colleges Total	4,310	3,653	4,263	16,175	17,337	(1,162)	13,226	8,609	4,617
University Total	22,342	15,288	22,000	52,391	59,256	(6,866)	48,965	33,883	15,082

The City University of New York
 2019-2020 Third Quarter Financial Report
 IFR Summary (\$000)

	Initial Balance			Revenue Projections	Expenditure Projections	(Over) / Under Expenditures	Year-to-date Revenue	Year-to-date Expenditures	(Over) / Under Expenditures
	7/1/2017	7/1/2018	7/1/2019						
Baruch College	3,126	1,919	1,201	5,226	5,480	(254)	3,368	2,794	574
Brooklyn College	1,877	2,526	3,045	1,979	2,591	(612)	1,529	1,064	465
City College	1,385	1,648	8,912	3,703	4,777	(1,074)	2,108	2,526	(418)
Hunter College	2,758	1,367	2,038	8,903	9,531	(627)	5,961	4,594	1,367
John Jay College	1,782	1,749	2,499	3,287	3,630	(343)	3,201	2,112	1,089
Lehman College	3,557	3,736	3,444	2,851	5,052	(2,201)	3,145	2,929	216
Medgar Evers College	6,109	2,314	1,743	189	231	(42)	873	301	572
NYC College of Technology	4,895	1,951	1,622	1,319	1,319	-	941	1,075	(133)
Queens College	1,817	1,342	1,773	7,349	7,349	-	4,511	3,230	1,282
College of Staten Island	3,521	911	997	2,192	2,349	(157)	2,090	1,816	274
York College	2,754	676	768	2,797	2,797	-	1,129	677	451
Senior Colleges Total	33,580	20,139	28,042	39,796	45,105	(5,310)	28,856	23,117	5,739
Graduate Center	932	690	663	2,718	2,770	(52)	93	57	36
CUNY School of Law	848	1,049	997	606	641	(35)	606	561	45
Newmark School of Journalism	81	343	397	251	240	11	401	30	371
School of Professional Studies	1,029	1,564	2,060	-	-	-	38	-	38
School of Public Health	45	78	101	43	55	(12)	143	70	73
School of Labor	-	-	-	1,200	1,599	(399)	1,200	647	553
Grad. and Prof. Schools Total	2,934	3,723	4,218	4,817	5,305	(488)	2,526	1,364	1,162
Central	34,809	29,121	37,687	-	-	-	11,764	12,069	(305)
University Total	71,323	52,983	69,947	44,613	50,410	(5,797)	43,146	36,551	6,596

The City University of New York
 2019-2020 Third Quarter Financial Report
 ACE Summary (\$000)

	Revenue		Expenditure		(Over) / Under	Year-to-date		Year-to-date		(Over) / Under
	Projections	Projections	Projections	Projections		Revenue	Expenditures	Revenue	Expenditures	
BMCC	936	936	-	-	-	669	505	164		
Bronx CC	402	402	-	-	-	150	257	(107)		
Hostos CC	1,374	1,374	-	-	-	1,421	1,227	194		
Kingsborough CC	2,591	2,591	-	-	-	1,950	1,230	720		
LaGuardia CC	3,674	3,674	-	-	-	1,996	1,280	716		
Queensborough CC	1,405	1,405	-	-	-	975	762	213		
Community Colleges Total	10,382	10,382	-	-	-	7,161	5,260	1,900		

The City University of New York
 2019-2020 Third Quarter Financial Report
 Academic Excellence Fee Summary (\$'000)

Year-to-Date Projected Expenses

Campus-Program	Total YTD	Temp					Waivers	OTPS	Total	Balance
	Revenue	PS Regular	Adjuncts	Service	Temp					
Baruch College MBA	931	691	-	-	-	13	227	931	-	
Baruch College MS Business	2,074	1,539	-	-	29	506	2,074	-		
Baruch College MS Financial Engineering	384	201	90	36	-	57	384	-		
Baruch College MS Public Affairs	124	114	7	2	-	-	124	-		
Baruch College MS International Affairs	114	105	6	2	-	-	114	-		
Baruch College Corporate Communications Programs	67	67	-	-	-	-	67	-		
Baruch College Industrial Organization Psychology Program	126	126	-	-	-	-	126	-		
Baruch College Mental Health Counseling Program	42	42	-	-	-	-	42	-		
Baruch College MPA	465	429	26	10	-	-	465	-		
Baruch Arts Administration Program	69	45	-	24	-	-	69	-		
Brooklyn College MFA in Cinema Arts	1,512	-	-	-	-	-	1,512	-		
Brooklyn College MFA in Sonic Arts	200	-	-	-	-	200	200	-		
Brooklyn College MFA in Media Scoring	261	-	-	-	-	261	261	-		
City College School of Architecture Graduate Programs	136	-	-	126	-	10	136	-		
City College MS Translational Medicine	120	94	-	26	-	-	120	-		
Hunter College MS Physician Assistant Programs	187	112	75	-	-	-	187	-		
Hunter College School of Education Graduate Programs	1,688	1,393	137	118	-	40	1,688	-		
Hunter College MS Geoinformatics	31	-	-	13	-	18	31	-		
Hunter College MFA Programs in Studio Art	74	-	-	19	-	55	74	-		
Hunter College Pre-Health Professionals Post BA Certificate Program	51	-	26	26	-	-	51	-		
Hunter College MS Accounting	32	-	9	8	-	24	32	-		
Hunter College MS Nursing	398	275	58	8	-	56	398	-		
Hunter College MS Nutrition/Dietetics	84	72	-	-	-	12	84	-		
John Jay College MA Criminal Justice	285	115	-	73	-	25	213	72		
John Jay College Graduate Psychology Programs	266	122	-	60	-	66	248	18		
Lehman College MS Accounting	82	-	-	-	-	82	82	-		
Lehman College MS Nursing	154	96	-	39	-	19	154	-		
Queens College School of Music Programs	83	-	-	25	-	58	83	-		
Queens College MS Risk Management	24	-	-	-	-	24	24	-		
Queens College Speech and Language Programs	71	-	-	19	-	52	71	-		
Queens College Advanced Certificate in ABA	4	-	-	4	-	-	4	-		
Queens College MA Data Analytics/MS Applied Social Research	43	-	-	18	-	24	43	-		
College of Staten Island MS Nursing	28	-	-	5	-	23	28	-		
York College MS Physician Assistant Programs	200	-	-	103	-	93	196	4		
Graduate Center MA Digital Humanities	35	-	-	13	-	22	35	-		
Graduate Center MS Cognitive Neuroscience	73	-	8	55	-	10	73	-		
Graduate Center MS International Migration	29	-	-	3	-	26	29	-		
Graduate Center MS Liberal Studies	131	-	14	12	-	105	131	-		
Graduate Center MS Middle Eastern Studies	17	-	-	7	-	10	17	-		
Graduate Center MS Data Science	45	-	-	4	-	41	45	-		
Graduate Center MS Quantitative Methods in the Social Sciences	41	-	-	8	-	33	41	-		
Graduate Center Data Analysis and Visualization	37	-	3	-	-	33	37	-		
Total	10,815	5,638	460	857	42	3,723	10,720	94		

The City University of New York
 2019-2020 Third Quarter Financial Report
 University Total

	Prior Year Actuals	MY Projection	Q3 Projection	Latest Quarter vs Prior Year Year [\$]	Latest Quarter vs Prior Year Year [%]
Current Budget	2,398,050	2,496,262	2,494,048	95,998	4%
Prior Year CUTRA and Reserves	62,578	59,840	59,840	(2,737)	-4%
Tuition Revenue Above Target	10,161	6,358	(16,138)	(26,299)	-259%
FY19 Labor Reserve	(23,818)	-	-	23,818	-100%
Total Campus Based Resources	2,446,971	2,562,460	2,537,751	90,780	4%
Centrally Administered Resources	1,137,092	1,201,328	1,162,937	25,845	2%
Total Resources (\$000)	3,584,063	3,763,788	3,700,688	116,625	3%
PS Regular	1,676,301	1,758,306	1,750,289	73,989	4%
Adjuncts	271,264	308,204	313,679	42,414	16%
Temporary Services	154,249	154,019	152,734	(1,515)	-1%
Total PS	2,101,814	2,220,530	2,216,702	114,888	5%
OTPS	271,136	288,250	269,459	(1,677)	-1%
Total Campus Based Expenditures	2,372,950	2,508,779	2,486,162	113,212	5%
Centrally Administered Expenditures	1,137,092	1,201,328	1,162,937	25,845	2%
Total Expenditures (\$000)	3,510,042	3,710,108	3,649,099	139,057	4%
Fringes	912,580	971,471	923,386	10,806	1%
Energy	96,228	104,103	96,089	(140)	0%
Building Rentals	63,668	76,116	77,619	13,951	22%
Financial Aid	64,616	49,638	65,844	1,228	2%
Total Centrally Administered Funds (\$000)	1,137,092	1,201,328	1,162,937	25,845	2%
Year-End Balance (\$000)	74,021	53,681	51,589	(22,432)	-30%

	Prior Year	Current Final Fall	Current Final Fall	Latest Quarter vs Prior Year Year [#]	Latest Quarter vs Prior Year Year [%]
Enrollment					
FTE	206,394	204,398	204,398	(1,996)	-1%
Headcount	274,907	271,244	271,244	(3,663)	-1%

	Prior Fall	Fall (October)	Spring (March)	Latest Quarter vs Prior Year Year [#]	Latest Quarter vs Prior Year Year [%]
Faculty Teaching	7,237	7,102	7,079	(158)	-2%
Faculty Support	2,681	2,675	2,718	37	1%
Academic Support	1,089	1,107	1,097	8	1%
Student Services	2,404	2,372	2,395	(9)	0%
Maintenance & Operations	1,922	1,846	1,824	(98)	-5%
General Administration	1,887	1,880	1,915	28	1%
General Institutional Services	2,670	2,581	2,596	(74)	-3%
SEEK/CD	131	131	134	3	2%
Total Full-Time Staffing	20,021	19,694	19,758	(263)	-1%

The City University of New York
2019-2020 Third Quarter Financial Report
Senior Colleges

	Prior Year Actuals	MY Projection	Q3 Projection	Latest Quarter vs Prior Year Year [\$]	Latest Quarter vs Prior Year Year [%]
Current Budget	1,328,396	1,406,209	1,402,983	74,587	6%
Prior Year CUTRA and Reserves	29,893	23,179	23,179	(6,714)	-22%
Tuition Revenue Above Target	(33)	6,105	(3,883)	(3,849)	11493%
FY19 Labor Reserve	(21,311)	-	-	21,311	-100%
Total Campus Based Resources	1,336,943	1,435,493	1,422,279	85,336	6%
Centrally Administered Resources	666,255	710,591	674,424	8,169	1%
Total Resources (\$000)	2,003,198	2,146,084	2,096,703	93,505	5%
PS Regular	996,768	1,046,160	1,042,436	45,668	5%
Adjuncts	172,330	205,587	206,506	34,176	20%
Temporary Services	73,767	76,097	72,789	(978)	-1%
Total PS	1,242,865	1,327,843	1,321,732	78,866	6%
OTPS	75,641	84,843	77,421	1,780	2%
Total Campus Based Expenditures	1,318,506	1,412,686	1,399,153	80,647	6%
Centrally Administered Expenditures	666,255	710,591	674,424	8,169	1%
Total Expenditures (\$000)	1,984,761	2,123,277	2,073,577	88,816	4%
Fringes	546,296	588,314	546,303	6	0%
Energy	69,788	70,735	69,244	(544)	-1%
Building Rentals	27,293	30,538	31,930	4,637	17%
Financial Aid	22,877	21,004	26,947	4,069	18%
Total Centrally Administered Funds (\$000)	666,255	710,591	674,424	8,169	1%
Year-End Balance (\$000)	18,437	22,807	23,126	4,689	25%

	Prior Fall	Current Final Fall	Current Final Fall	Latest Quarter vs Prior Year Year [#]	Latest Quarter vs Prior Year Year [%]
Enrollment					
FTE	132,417	132,683	132,683	266	0%
Headcount	171,209	170,399	170,399	(810)	0%

	Prior Fall	Fall (October)	Spring (March)	Latest Quarter vs Prior Year Year [#]	Latest Quarter vs Prior Year Year [%]
Faculty Teaching	4,544	4,447	4,416	(128)	-3%
Faculty Support	1,679	1,651	1,683	4	0%
Academic Support	481	471	468	(13)	-3%
Student Services	1,261	1,236	1,247	(14)	-1%
Maintenance & Operations	1,310	1,262	1,248	(62)	-5%
General Administration	896	885	901	5	1%
General Institutional Services	1,437	1,391	1,399	(38)	-3%
SEEK/CD	90	88	89	(1)	-1%
Total Full-Time Staffing	11,698	11,431	11,451	(247)	-2%

The City University of New York
2019-2020 Third Quarter Financial Report
Grad. and Prof. Schools

	Prior Year Actuals	MY Projection	Q3 Projection	Latest Quarter vs Prior Year Year [\$]	Latest Quarter vs Prior Year Year [%]
Current Budget	196,630	212,226	215,345	18,716	10%
Prior Year CUTRA and Reserves	14,228	16,290	16,290	2,062	14%
Tuition Revenue Above Target	13,224	5,893	4,953	(8,271)	-63%
FY19 Labor Reserve	(2,507)	-	-	2,507	-100%
Total Campus Based Resources	221,575	234,410	236,589	15,014	7%
Centrally Administered Resources	93,088	109,330	97,483	4,395	5%
Total Resources (\$000)	314,663	343,739	334,072	19,410	6%
PS Regular	124,508	140,070	139,014	14,505	12%
Adjuncts	7,738	9,106	9,325	1,587	21%
Temporary Services	24,267	25,372	25,488	1,222	5%
Total PS	156,513	174,549	173,827	17,314	11%
OTPS	48,771	47,099	48,305	(466)	-1%
Total Campus Based Expenditures	205,284	221,648	222,132	16,848	8%
Centrally Administered Expenditures	93,088	109,330	97,483	4,395	5%
Total Expenditures (\$000)	298,372	330,978	319,616	21,243	7%
Fringes	68,691	77,336	71,847	3,156	5%
Energy	2,404	9,332	2,378	(26)	-1%
Building Rentals	12,882	13,662	13,957	1,075	8%
Financial Aid	9,111	9,000	9,302	191	2%
Total Centrally Administered Funds (\$000)	93,088	109,330	97,483	4,395	5%
Year-End Balance (\$000)	16,290	12,761	14,457	(1,834)	-11%

	Prior Fall	Current Final Fall	Current Final Fall	Latest Quarter vs Prior Year Year [#]	Latest Quarter vs Prior Year Year [%]
Enrollment					
FTE	5,609	5,982	5,982	373	7%
Headcount	8,624	9,129	9,129	505	6%

	Prior Fall	Fall (October)	Spring (March)	Latest Quarter vs Prior Year Year [#]	Latest Quarter vs Prior Year Year [%]
Faculty Teaching	423	431	438	15	4%
Faculty Support	162	176	179	17	10%
Academic Support	150	183	184	34	23%
Student Services	156	173	173	17	11%
Maintenance & Operations	13	14	18	5	38%
General Administration	161	183	185	24	15%
General Institutional Services	162	166	171	9	6%
SEEK/CD	-	-	-	-	0%
Total Full-Time Staffing	1,227	1,326	1,348	121	10%

The City University of New York
2019-2020 Third Quarter Financial Report
Community Colleges

	Prior Year Actuals	MY Projection	Q3 Projection	Latest Quarter vs Prior Year Year [\$]	Latest Quarter vs Prior Year Year [%]
Current Budget	729,727	733,545	721,462	(8,264)	-1%
Prior Year CUTRA and Reserves	18,457	20,371	20,371	1,914	10%
Tuition Revenue Above Target	(3,029)	(5,640)	(17,208)	(14,179)	468%
FY19 Labor Reserve	-	-	-	-	0%
Total Campus Based Resources	745,154	748,276	724,625	(20,530)	-3%
Centrally Administered Resources	317,570	310,744	320,706	3,135	1%
Total Resources (\$000)	1,062,725	1,059,020	1,045,331	(17,394)	-2%
PS Regular	480,189	491,893	485,255	5,066	1%
Adjuncts	91,196	93,511	97,847	6,651	7%
Temporary Services	48,132	45,743	46,207	(1,925)	-4%
Total PS	619,517	631,148	629,309	9,791	2%
OTPS	105,266	104,228	87,980	(17,286)	-16%
Total Campus Based Expenditures	724,784	735,376	717,289	(7,495)	-1%
Centrally Administered Expenditures	317,570	310,744	320,706	3,135	1%
Total Expenditures (\$000)	1,042,354	1,046,120	1,037,994	(4,360)	0%
Fringes	261,112	267,280	267,280	6,167	2%
Energy	23,831	23,831	23,831	-	0%
Building Rentals	-	-	-	-	0%
Financial Aid	32,628	19,634	29,595	(3,032)	-9%
Total Centrally Administered Funds (\$000)	317,570	310,744	320,706	3,135	1%
Year-End Balance (\$000)	20,371	12,899	7,336	(13,035)	-64%

	Prior Year	Current Final Fall	Current Final Fall	Latest Quarter vs Prior Year Year [#]	Latest Quarter vs Prior Year Year [%]
Enrollment					
FTE	68,368	65,733	65,733	(2,635)	-4%
Headcount	95,074	91,716	91,716	(3,358)	-4%

	Prior Fall	Fall (October)	Spring (March)	Latest Quarter vs Prior Year Year [#]	Latest Quarter vs Prior Year Year [%]
Faculty Teaching	2,270	2,224	2,225	(45)	-2%
Faculty Support	840	848	856	16	2%
Academic Support	328	297	293	(35)	-11%
Student Services	827	800	804	(23)	-3%
Maintenance & Operations	582	553	541	(41)	-7%
General Administration	453	422	425	(28)	-6%
General Institutional Services	804	763	766	(38)	-5%
SEEK/CD	34	37	39	5	15%
Total Full-Time Staffing	6,138	5,944	5,949	(189)	-3%

The City University of New York
 2019-2020 Third Quarter Financial Report
 Shared Services

	Prior Year Actuals	MY Projection	Q3 Projection	Latest Quarter vs Prior Year Year [\$]	Latest Quarter vs Prior Year Year [%]
Current Budget	97,073	98,873	106,692	9,619	10%
Prior Year CUTRA and Reserves	-	-	-	-	0%
Tuition Revenue Above Target	-	-	-	-	0%
FY19 Labor Reserve	-	-	-	-	0%
Total Campus Based Resources	97,073	98,873	106,692	9,619	10%
Centrally Administered Resources	41,649	47,916	47,394	5,744	14%
Total Resources (\$000)	138,722	146,789	154,086	15,363	11%
PS Regular	51,218	53,308	55,596	4,377	9%
Adjuncts	-	-	-	-	0%
Temporary Services	6,328	5,680	6,294	(33)	-1%
Total PS	57,546	58,987	61,890	4,344	8%
OTPS	29,063	35,643	39,854	10,791	37%
Total Campus Based Expenditures	86,609	94,631	101,744	15,135	17%
Centrally Administered Expenditures	41,649	47,916	47,394	5,744	14%
Total Expenditures (\$000)	128,258	142,547	149,138	20,879	16%
Fringes	25,248	26,135	25,581	333	1%
Energy	142	139	428	286	201%
Building Rentals	16,259	21,642	21,385	5,125	32%
Financial Aid	-	-	-	-	0%
Total Centrally Administered Funds (\$000)	41,649	47,916	47,394	5,744	14%
Year-End Balance (\$000)	10,464	4,242	4,948	(5,516)	-53%

	Prior Fall	Current Final Fall	Current Final Fall	Latest Quarter vs Prior Year Year [#]	Latest Quarter vs Prior Year Year [%]
Enrollment					
FTE	-	-	-	-	0%
Headcount	-	-	-	-	0%

	Prior Fall	Fall (October)	Spring (March)	Latest Quarter vs Prior Year Year [#]	Latest Quarter vs Prior Year Year [%]
Faculty Teaching	-	-	-	-	0%
Faculty Support	-	-	-	-	0%
Academic Support	34	34	33	(1)	-3%
Student Services	135	136	145	10	7%
Maintenance & Operations	-	-	-	-	0%
General Administration	311	318	329	18	6%
General Institutional Services	247	240	239	(8)	-3%
SEEK/CD	-	-	-	-	0%
Total Full-Time Staffing	727	728	746	19	3%

The City University of New York
 2019-2020 Third Quarter Financial Report
 System Administration

	Prior Year Actuals	MY Projection	Q3 Projection	Latest Quarter vs Prior Year Year [\$]	Latest Quarter vs Prior Year Year [%]
Current Budget	28,468	28,300	29,390	923	3%
Prior Year CUTRA and Reserves	-	-	-	-	0%
Tuition Revenue Above Target	-	-	-	-	0%
FY19 Labor Reserve	-	-	-	-	0%
Total Campus Based Resources	28,468	28,300	29,390	923	3%
Centrally Administered Resources	17,141	17,057	17,034	(107)	-1%
Total Resources (\$000)	45,609	45,356	46,424	816	2%
PS Regular	18,947	20,317	21,121	2,174	11%
Adjuncts	-	-	-	-	0%
Temporary Services	1,346	680	1,123	(223)	-17%
Total PS	20,293	20,997	22,244	1,951	10%
OTPS	5,366	6,452	5,601	235	4%
Total Campus Based Expenditures	25,659	27,449	27,845	2,186	9%
Centrally Administered Expenditures	17,141	17,057	17,034	(107)	-1%
Total Expenditures (\$000)	42,800	44,506	44,879	2,079	5%
Fringes	10,391	9,303	9,194	(1,197)	-12%
Energy	58	50	154	95	163%
Building Rentals	6,692	7,704	7,686	994	15%
Financial Aid	-	-	-	-	0%
Total Centrally Administered Funds (\$000)	17,141	17,057	17,034	(107)	-1%
Year-End Balance (\$000)	2,808	850	1,545	(1,263)	-45%

	Prior Fall	Current Final Fall	Current Final Fall	Latest Quarter vs Prior Year Year [#]	Latest Quarter vs Prior Year Year [%]
Enrollment					
FTE	-	-	-	-	0%
Headcount	-	-	-	-	0%

	Prior Fall	Fall (October)	Spring (March)	Latest Quarter vs Prior Year Year [#]	Latest Quarter vs Prior Year Year [%]
Faculty Teaching	-	-	-	-	0%
Faculty Support	-	-	-	-	0%
Academic Support	43	45	39	(4)	-9%
Student Services	25	27	26	1	4%
Maintenance & Operations	17	17	17	-	0%
General Administration	66	72	75	9	14%
General Institutional Services	20	21	21	1	5%
SEEK/CD	-	-	-	-	0%
Total Full-Time Staffing	171	182	178	7	4%

The City University of New York
 2019-2020 Third Quarter Financial Report
 University Programs

	Prior Year Actuals	MY Projection	Q3 Projection	Latest Quarter vs Prior Year Year [\$]	Latest Quarter vs Prior Year Year [%]
Current Budget	17,758	17,110	18,175	417	2%
Prior Year CUTRA and Reserves	-	-	-	-	0%
Tuition Revenue Above Target	-	-	-	-	0%
FY19 Labor Reserve	-	-	-	-	0%
Total Campus Based Resources	17,758	17,110	18,175	417	2%
Centrally Administered Resources	1,388	5,691	5,896	4,508	325%
Total Resources (\$000)	19,146	22,800	24,071	4,926	26%
PS Regular	4,670	6,559	6,868	2,198	47%
Adjuncts	-	-	-	-	0%
Temporary Services	409	447	832	423	104%
Total PS	5,079	7,005	7,700	2,621	52%
OTPS	7,029	9,983	10,298	3,270	47%
Total Campus Based Expenditures	12,108	16,988	17,998	5,891	49%
Centrally Administered Expenditures	1,388	5,691	5,896	4,508	325%
Total Expenditures (\$000)	13,496	22,679	23,894	10,399	77%
Fringes	841	3,104	3,183	2,341	278%
Energy	5	17	53	49	1025%
Building Rentals	542	2,570	2,660	2,119	391%
Financial Aid	-	-	-	-	0%
Total Centrally Administered Funds (\$000)	1,388	5,691	5,896	4,508	325%
Year-End Balance (\$000)	5,650	121	177	(5,473)	-97%

	Prior Fall	Current Final Fall	Current Final Fall	Latest Quarter vs Prior Year Year [#]	Latest Quarter vs Prior Year Year [%]
Enrollment					
FTE	-	-	-	-	0%
Headcount	-	-	-	-	0%

	Prior Fall	Fall (October)	Spring (March)	Latest Quarter vs Prior Year Year [#]	Latest Quarter vs Prior Year Year [%]
Faculty Teaching	-	-	-	-	0%
Faculty Support	-	-	-	-	0%
Academic Support	53	77	80	27	51%
Student Services	-	-	-	-	0%
Maintenance & Operations	-	-	-	-	0%
General Administration	-	-	-	-	0%
General Institutional Services	-	-	-	-	0%
SEEK/CD	7	6	6	(1)	-14%
Total Full-Time Staffing	60	83	86	26	43%

The City University of New York
 2019-2020 Third Quarter Financial Report
 Baruch College

	Prior Year Actuals	MY Projection	Q3 Projection	Latest Quarter vs Prior Year Year [\$]	Latest Quarter vs Prior Year Year [%]
Current Budget	142,378	147,812	147,996	5,618	4%
Prior Year CUTRA and Reserves	4,372	1,031	1,031	(3,341)	-76%
Tuition Revenue Above Target	(3,930)	2,968	956	4,886	-124%
FY19 Labor Reserve	(1,965)	-	-	1,965	-100%
Total Campus Based Resources	140,855	151,812	149,983	9,128	6%
Centrally Administered Resources	66,945	71,760	67,097	152	0%
Total Resources (\$000)	207,800	223,572	217,081	9,280	4%
PS Regular	113,741	120,628	118,944	5,203	5%
Adjuncts	15,079	18,249	18,470	3,391	22%
Temporary Services	4,673	4,012	3,763	(910)	-19%
Total PS	133,493	142,888	141,177	7,684	6%
OTPS	6,331	7,200	6,500	169	3%
Total Campus Based Expenditures	139,824	150,088	147,677	7,853	6%
Centrally Administered Expenditures	66,945	71,760	67,097	152	0%
Total Expenditures (\$000)	206,769	221,849	214,774	8,005	4%
Fringes	58,772	63,308	58,352	(420)	-1%
Energy	4,373	4,434	4,346	(27)	-1%
Building Rentals	2,203	2,291	2,303	100	5%
Financial Aid	1,598	1,728	2,096	498	31%
Total Centrally Administered Funds (\$000)	66,945	71,760	67,097	152	0%
Year-End Balance (\$000)	1,031	1,723	2,306	1,275	124%

	Prior Fall	Current Final Fall	Current Final Fall	Latest Quarter vs Prior Year Year [#]	Latest Quarter vs Prior Year Year [%]
Enrollment					
FTE	14,314	15,069	15,069	755	5%
Headcount	18,029	18,679	18,679	650	4%

	Prior Fall	Fall (October)	Spring (March)	Latest Quarter vs Prior Year Year [#]	Latest Quarter vs Prior Year Year [%]
Faculty Teaching	480	469	464	(16)	-3%
Faculty Support	147	142	149	2	1%
Academic Support	32	29	29	(3)	-9%
Student Services	171	174	176	5	3%
Maintenance & Operations	133	124	119	(14)	-11%
General Administration	87	82	83	(4)	-5%
General Institutional Services	164	152	154	(10)	-6%
SEEK/CD	10	10	11	1	10%
Total Full-Time Staffing	1,224	1,182	1,185	(39)	-3%

The City University of New York
 2019-2020 Third Quarter Financial Report
 Brooklyn College

	Prior Year Actuals	MY Projection	Q3 Projection	Latest Quarter vs Prior Year Year [\$]	Latest Quarter vs Prior Year Year [%]
Current Budget	139,679	148,318	148,992	9,314	7%
Prior Year CUTRA and Reserves	3,744	1,937	1,937	(1,808)	-48%
Tuition Revenue Above Target	(981)	(1,577)	(836)	145	-15%
FY19 Labor Reserve	(2,113)	-	-	2,113	-100%
Total Campus Based Resources	140,329	148,678	150,093	9,764	7%
Centrally Administered Resources	66,905	74,042	70,070	3,165	5%
Total Resources (\$000)	207,234	222,721	220,163	12,929	6%
PS Regular	103,262	108,547	108,175	4,913	5%
Adjuncts	15,551	18,452	19,300	3,749	24%
Temporary Services	10,058	10,802	10,637	580	6%
Total PS	128,871	137,801	138,112	9,241	7%
OTPS	9,521	9,527	9,200	(321)	-3%
Total Campus Based Expenditures	138,392	147,328	147,312	8,920	6%
Centrally Administered Expenditures	66,905	74,042	70,070	3,165	5%
Total Expenditures (\$000)	205,297	221,371	217,383	12,085	6%
Fringes	56,654	61,054	57,085	431	1%
Energy	8,670	8,587	8,352	(318)	-4%
Building Rentals	-	2,929	2,885	2,885	0%
Financial Aid	1,582	1,472	1,749	167	11%
Total Centrally Administered Funds (\$000)	66,905	74,042	70,070	3,165	5%
Year-End Balance (\$000)	1,937	1,350	2,780	844	44%

	Prior Fall	Current Final Fall	Current Final Fall	Latest Quarter vs Prior Year Year [#]	Latest Quarter vs Prior Year Year [%]
Enrollment					
FTE	14,125	14,099	14,099	(26)	0%
Headcount	18,161	17,811	17,811	(350)	-2%

	Prior Fall	Fall (October)	Spring (March)	Latest Quarter vs Prior Year Year [#]	Latest Quarter vs Prior Year Year [%]
Faculty Teaching	493	482	473	(20)	-4%
Faculty Support	169	171	170	1	1%
Academic Support	61	55	54	(7)	-11%
Student Services	134	140	145	11	8%
Maintenance & Operations	125	128	124	(1)	-1%
General Administration	80	84	84	4	5%
General Institutional Services	144	138	135	(9)	-6%
SEEK/CD	8	8	9	1	13%
Total Full-Time Staffing	1,214	1,206	1,194	(20)	-2%

The City University of New York
 2019-2020 Third Quarter Financial Report
 City College

	Prior Year Actuals	MY Projection	Q3 Projection	Latest Quarter vs Prior Year Year [\$]	Latest Quarter vs Prior Year Year [%]
Current Budget	165,127	175,864	177,075	11,948	7%
Prior Year CUTRA and Reserves	7,095	5,443	5,443	(1,651)	-23%
Tuition Revenue Above Target	2,154	2,333	(848)	(3,002)	-139%
FY19 Labor Reserve	(2,421)	-	-	2,421	-100%
Total Campus Based Resources	171,954	183,640	181,670	9,716	6%
Centrally Administered Resources	84,411	88,579	83,530	(881)	-1%
Total Resources (\$000)	256,365	272,220	265,200	8,835	3%
PS Regular	132,111	135,140	134,343	2,232	2%
Adjuncts	14,421	16,568	17,390	2,969	21%
Temporary Services	7,098	9,281	8,437	1,339	19%
Total PS	153,629	160,989	160,170	6,541	4%
OTPS	12,882	18,470	17,020	4,138	32%
Total Campus Based Expenditures	166,511	179,459	177,190	10,679	6%
Centrally Administered Expenditures	84,411	88,579	83,530	(881)	-1%
Total Expenditures (\$000)	250,922	268,038	260,720	9,799	4%
Fringes	67,392	71,328	66,202	(1,190)	-2%
Energy	12,885	13,054	12,767	(118)	-1%
Building Rentals	2,571	2,759	2,706	135	5%
Financial Aid	1,563	1,439	1,856	292	19%
Total Centrally Administered Funds (\$000)	84,411	88,579	83,530	(881)	-1%
Year-End Balance (\$000)	5,443	4,182	4,480	(963)	-18%

	Prior Fall	Current Final Fall	Current Final Fall	Latest Quarter vs Prior Year Year [#]	Latest Quarter vs Prior Year Year [%]
Enrollment					
FTE	12,578	12,590	12,590	12	0%
Headcount	16,043	15,816	15,816	(227)	-1%

	Prior Fall	Fall (October)	Spring (March)	Latest Quarter vs Prior Year Year [#]	Latest Quarter vs Prior Year Year [%]
Faculty Teaching	549	536	546	(3)	0%
Faculty Support	249	242	265	16	6%
Academic Support	54	49	49	(5)	-9%
Student Services	94	92	96	2	2%
Maintenance & Operations	182	185	180	(2)	-1%
General Administration	109	103	119	10	9%
General Institutional Services	198	210	199	1	1%
SEEK/CD	2	2	2	-	0%
Total Full-Time Staffing	1,437	1,419	1,456	19	1%

The City University of New York
2019-2020 Third Quarter Financial Report
Hunter College

	Prior Year Actuals	MY Projection	Q3 Projection	Latest Quarter vs Prior Year Year [\$]	Latest Quarter vs Prior Year Year [%]
Current Budget	187,939	195,334	193,903	5,964	3%
Prior Year CUTRA and Reserves	732	204	204	(528)	-72%
Tuition Revenue Above Target	884	2,457	1,039	156	18%
FY19 Labor Reserve	(3,265)	-	-	3,265	-100%
Total Campus Based Resources	186,290	197,996	195,146	8,856	5%
Centrally Administered Resources	92,239	98,208	92,635	396	0%
Total Resources (\$000)	278,529	296,204	287,781	9,252	3%
PS Regular	137,410	143,588	143,209	5,799	4%
Adjuncts	25,968	30,605	30,782	4,815	19%
Temporary Services	12,932	13,672	13,169	237	2%
Total PS	176,309	187,866	187,161	10,851	6%
OTPS	9,777	9,000	7,870	(1,907)	-20%
Total Campus Based Expenditures	186,086	196,866	195,031	8,944	5%
Centrally Administered Expenditures	92,239	98,208	92,635	396	0%
Total Expenditures (\$000)	278,325	295,074	287,665	9,340	3%
Fringes	77,595	83,236	77,358	(237)	0%
Energy	8,003	7,987	7,822	(181)	-2%
Building Rentals	5,617	6,090	6,209	592	11%
Financial Aid	1,024	895	1,246	222	22%
Total Centrally Administered Funds (\$000)	92,239	98,208	92,635	396	0%
Year-End Balance (\$000)	204	1,130	116	(88)	-43%

	Prior Fall	Current Final Fall	Current Final Fall	Latest Quarter vs Prior Year Year [#]	Latest Quarter vs Prior Year Year [%]
Enrollment					
FTE	18,113	18,080	18,080	(33)	0%
Headcount	23,202	23,193	23,193	(9)	0%

	Prior Fall	Fall (October)	Spring (March)	Latest Quarter vs Prior Year Year [#]	Latest Quarter vs Prior Year Year [%]
Faculty Teaching	613	591	589	(24)	-4%
Faculty Support	203	198	196	(7)	-3%
Academic Support	66	65	67	1	2%
Student Services	156	134	150	(6)	-4%
Maintenance & Operations	182	178	175	(7)	-4%
General Administration	133	136	140	7	5%
General Institutional Services	219	202	203	(16)	-7%
SEEK/CD	7	6	6	(1)	-14%
Total Full-Time Staffing	1,579	1,510	1,526	(53)	-3%

The City University of New York
 2019-2020 Third Quarter Financial Report
 John Jay College

	Prior Year Actuals	MY Projection	Q3 Projection	Latest Quarter vs Prior Year Year [\$]	Latest Quarter vs Prior Year Year [%]
Current Budget	116,030	121,873	120,617	4,588	4%
Prior Year CUTRA and Reserves	933	1,126	1,126	193	21%
Tuition Revenue Above Target	2,335	2,644	2,146	(189)	-8%
FY19 Labor Reserve	(1,828)	-	-	1,828	-100%
Total Campus Based Resources	117,471	125,644	123,890	6,419	5%
Centrally Administered Resources	60,146	65,586	61,811	1,665	3%
Total Resources (\$000)	177,616	191,229	185,701	8,084	5%
PS Regular	85,120	90,900	89,846	4,726	6%
Adjuncts	17,438	19,966	19,856	2,418	14%
Temporary Services	6,089	7,095	6,799	711	12%
Total PS	108,647	117,961	116,502	7,855	7%
OTPS	7,697	7,600	6,600	(1,097)	-14%
Total Campus Based Expenditures	116,344	125,561	123,102	6,758	6%
Centrally Administered Expenditures	60,146	65,586	61,811	1,665	3%
Total Expenditures (\$000)	176,490	191,147	184,913	8,423	5%
Fringes	47,728	52,264	48,153	425	1%
Energy	4,732	4,796	4,697	(35)	-1%
Building Rentals	5,854	6,660	6,758	904	15%
Financial Aid	1,831	1,865	2,202	371	20%
Total Centrally Administered Funds (\$000)	60,146	65,586	61,811	1,665	3%
Year-End Balance (\$000)	1,126	83	788	(338)	-30%

	Prior Fall	Current Final Fall	Current Final Fall	Latest Quarter vs Prior Year Year [#]	Latest Quarter vs Prior Year Year [%]
Enrollment					
FTE	12,296	12,770	12,770	474	4%
Headcount	15,394	15,880	15,880	486	3%

	Prior Fall	Fall (October)	Spring (March)	Latest Quarter vs Prior Year Year [#]	Latest Quarter vs Prior Year Year [%]
Faculty Teaching	378	370	370	(8)	-2%
Faculty Support	138	152	154	16	12%
Academic Support	38	42	43	5	13%
Student Services	130	131	131	1	1%
Maintenance & Operations	89	87	90	1	1%
General Administration	88	94	98	10	11%
General Institutional Services	123	117	127	4	3%
SEEK/CD	10	9	10	-	0%
Total Full-Time Staffing	994	1,002	1,023	29	3%

The City University of New York
 2019-2020 Third Quarter Financial Report
 Lehman College

	Prior Year Actuals	MY Projection	Q3 Projection	Latest Quarter vs Prior Year Year [\$]	Latest Quarter vs Prior Year Year [%]
Current Budget	103,979	114,076	114,597	10,618	10%
Prior Year CUTRA and Reserves	7,445	9,614	9,614	2,169	29%
Tuition Revenue Above Target	5,310	2,212	1,900	(3,410)	-64%
FY19 Labor Reserve	(1,546)	-	-	1,546	-100%
Total Campus Based Resources	115,189	125,902	126,111	10,922	9%
Centrally Administered Resources	51,406	55,530	52,083	676	1%
Total Resources (\$000)	166,595	181,433	178,194	11,599	7%
PS Regular	78,972	84,463	83,524	4,552	6%
Adjuncts	15,727	18,010	17,924	2,197	14%
Temporary Services	4,301	4,975	4,723	422	10%
Total PS	99,000	107,448	106,171	7,171	7%
OTPS	6,575	7,951	7,051	476	7%
Total Campus Based Expenditures	105,575	115,398	113,222	7,647	7%
Centrally Administered Expenditures	51,406	55,530	52,083	676	1%
Total Expenditures (\$000)	156,981	170,929	165,304	8,323	5%
Fringes	43,610	47,606	43,883	273	1%
Energy	5,260	5,330	5,217	(43)	-1%
Building Rentals	918	872	937	18	2%
Financial Aid	1,618	1,722	2,046	428	26%
Total Centrally Administered Funds (\$000)	51,406	55,530	52,083	676	1%
Year-End Balance (\$000)	9,614	10,504	12,890	3,276	34%

	Prior Fall	Current Final Fall	Current Final Fall	Latest Quarter vs Prior Year Year [#]	Latest Quarter vs Prior Year Year [%]
Enrollment					
FTE	10,400	10,650	10,650	250	2%
Headcount	14,787	15,143	15,143	356	2%

	Prior Fall	Fall (October)	Spring (March)	Latest Quarter vs Prior Year Year [#]	Latest Quarter vs Prior Year Year [%]
Faculty Teaching	357	366	368	11	3%
Faculty Support	169	167	170	1	1%
Academic Support	48	49	49	1	2%
Student Services	101	96	93	(8)	-8%
Maintenance & Operations	119	107	109	(10)	-8%
General Administration	58	56	56	(2)	-3%
General Institutional Services	103	92	95	(8)	-8%
SEEK/CD	11	11	10	(1)	-9%
Total Full-Time Staffing	966	944	950	(16)	-2%

The City University of New York
 2019-2020 Third Quarter Financial Report
 Medgar Evers College

	Prior Year Actuals	MY Projection	Q3 Projection	Latest Quarter vs Prior Year Year [\$]	Latest Quarter vs Prior Year Year [%]
Current Budget	60,449	65,726	64,366	3,917	6%
Prior Year CUTRA and Reserves	-	-	-	-	0%
Tuition Revenue Above Target	(2,064)	(3,200)	(3,499)	(1,434)	69%
FY19 Labor Reserve	(901)	-	-	901	-100%
Total Campus Based Resources	57,484	62,527	60,868	3,383	6%
Centrally Administered Resources	30,675	30,741	30,000	(675)	-2%
Total Resources (\$000)	88,159	93,267	90,867	2,708	3%
PS Regular	45,540	46,700	47,654	2,114	5%
Adjuncts	8,293	8,581	8,469	176	2%
Temporary Services	3,402	3,500	3,303	(100)	-3%
Total PS	57,235	58,781	59,426	2,191	4%
OTPS	3,028	3,686	3,100	72	2%
Total Campus Based Expenditures	60,263	62,467	62,526	2,263	4%
Centrally Administered Expenditures	30,675	30,741	30,000	(675)	-2%
Total Expenditures (\$000)	90,938	93,208	92,525	1,588	2%
Fringes	25,147	26,044	24,562	(585)	-2%
Energy	2,048	2,027	1,986	(63)	-3%
Building Rentals	520	381	477	(43)	-8%
Financial Aid	2,960	2,290	2,975	15	0%
Total Centrally Administered Funds (\$000)	30,675	30,741	30,000	(675)	-2%
Year-End Balance (\$000)	(2,779)	60	(1,658)	1,121	-40%

	Prior Fall	Current Final Fall	Current Final Fall	Latest Quarter vs Prior Year Year [#]	Latest Quarter vs Prior Year Year [%]
Enrollment					
FTE	5,198	4,587	4,587	(611)	-12%
Headcount	6,638	5,798	5,798	(840)	-13%

	Prior Fall	Fall (October)	Spring (March)	Latest Quarter vs Prior Year Year [#]	Latest Quarter vs Prior Year Year [%]
Faculty Teaching	160	156	151	(9)	-6%
Faculty Support	74	80	77	3	4%
Academic Support	38	35	35	(3)	-8%
Student Services	82	82	84	2	2%
Maintenance & Operations	72	68	65	(7)	-10%
General Administration	67	64	59	(8)	-12%
General Institutional Services	82	75	71	(11)	-13%
SEEK/CD	8	9	9	1	13%
Total Full-Time Staffing	583	569	551	(32)	-5%

The City University of New York
 2019-2020 Third Quarter Financial Report
 NYC College of Technology

	Prior Year Actuals	MY Projection	Q3 Projection	Latest Quarter vs Prior Year Year [\$]	Latest Quarter vs Prior Year Year [%]
Current Budget	107,397	112,444	113,041	5,644	5%
Prior Year CUTRA and Reserves	777	859	859	82	11%
Tuition Revenue Above Target	(2,390)	(1,996)	(3,496)	(1,106)	46%
FY19 Labor Reserve	(2,147)	-	-	2,147	-100%
Total Campus Based Resources	103,636	111,307	110,404	6,768	7%
Centrally Administered Resources	59,464	62,479	61,602	2,138	4%
Total Resources (\$000)	163,101	173,787	172,007	8,906	5%
PS Regular	71,858	75,691	75,942	4,084	6%
Adjuncts	21,328	28,598	28,663	7,335	34%
Temporary Services	5,904	3,417	3,062	(2,842)	-48%
Total PS	99,090	107,706	107,667	8,577	9%
OTPS	3,687	3,100	2,705	(982)	-27%
Total Campus Based Expenditures	102,777	110,806	110,372	7,594	7%
Centrally Administered Expenditures	59,464	62,479	61,602	2,138	4%
Total Expenditures (\$000)	162,242	173,285	171,974	9,733	6%
Fringes	43,427	47,720	44,501	1,074	2%
Energy	8,505	8,792	8,630	125	1%
Building Rentals	3,583	2,682	3,689	106	3%
Financial Aid	3,949	3,284	4,783	833	21%
Total Centrally Administered Funds (\$000)	59,464	62,479	61,602	2,138	4%
Year-End Balance (\$000)	859	501	32	(827)	-96%

	Prior Fall	Current Final Fall	Current Final Fall	Latest Quarter vs Prior Year Year [#]	Latest Quarter vs Prior Year Year [%]
Enrollment					
FTE	12,748	12,502	12,502	(246)	-2%
Headcount	17,269	17,036	17,036	(233)	-1%

	Prior Fall	Fall (October)	Spring (March)	Latest Quarter vs Prior Year Year [#]	Latest Quarter vs Prior Year Year [%]
Faculty Teaching	396	378	369	(27)	-7%
Faculty Support	142	120	122	(20)	-14%
Academic Support	29	45	45	16	55%
Student Services	98	98	93	(5)	-5%
Maintenance & Operations	92	91	87	(5)	-5%
General Administration	74	73	71	(3)	-4%
General Institutional Services	92	94	101	9	10%
SEEK/CD	7	7	6	(1)	-14%
Total Full-Time Staffing	930	906	894	(36)	-4%

The City University of New York
2019-2020 Third Quarter Financial Report
Queens College

	Prior Year Actuals	MY Projection	Q3 Projection	Latest Quarter vs Prior Year Year [\$]	Latest Quarter vs Prior Year Year [%]
Current Budget	138,133	145,986	145,630	7,497	5%
Prior Year CUTRA and Reserves	4,733	2,951	2,951	(1,782)	-38%
Tuition Revenue Above Target	874	1,685	505	(369)	-42%
FY19 Labor Reserve	(2,288)	-	-	2,288	-100%
Total Campus Based Resources	141,452	150,623	149,086	7,635	5%
Centrally Administered Resources	71,064	76,126	71,973	909	1%
Total Resources (\$000)	212,515	226,749	221,059	8,544	4%
PS Regular	104,930	110,575	111,151	6,221	6%
Adjuncts	18,070	21,448	20,702	2,632	15%
Temporary Services	8,392	8,237	8,038	(354)	-4%
Total PS	131,393	140,260	139,891	8,498	6%
OTPS	7,108	7,334	7,934	826	12%
Total Campus Based Expenditures	138,500	147,594	147,825	9,325	7%
Centrally Administered Expenditures	71,064	76,126	71,973	909	1%
Total Expenditures (\$000)	209,564	223,721	219,797	10,234	5%
Fringes	57,785	62,144	57,820	35	0%
Energy	6,715	6,806	6,665	(50)	-1%
Building Rentals	5,027	5,222	5,319	292	6%
Financial Aid	1,536	1,955	2,168	632	41%
Total Centrally Administered Funds (\$000)	71,064	76,126	71,973	909	1%
Year-End Balance (\$000)	2,951	3,028	1,262	(1,690)	-57%

	Prior Fall	Current Final Fall	Current Final Fall	Latest Quarter vs Prior Year Year [#]	Latest Quarter vs Prior Year Year [%]
Enrollment					
FTE	15,424	15,589	15,589	165	1%
Headcount	19,746	19,923	19,923	177	1%

	Prior Fall	Fall (October)	Spring (March)	Latest Quarter vs Prior Year Year [#]	Latest Quarter vs Prior Year Year [%]
Faculty Teaching	558	551	546	(12)	-2%
Faculty Support	139	136	137	(2)	-1%
Academic Support	63	59	55	(8)	-13%
Student Services	116	118	115	(1)	-1%
Maintenance & Operations	139	132	133	(6)	-4%
General Administration	79	83	83	4	5%
General Institutional Services	125	124	127	2	2%
SEEK/CD	10	10	10	-	0%
Total Full-Time Staffing	1,229	1,213	1,206	(23)	-2%

The City University of New York
 2019-2020 Third Quarter Financial Report
 College of Staten Island

	Prior Year Actuals	MY Projection	Q3 Projection	Latest Quarter vs Prior Year Year [\$]	Latest Quarter vs Prior Year Year [%]
Current Budget	108,128	112,749	111,387	3,259	3%
Prior Year CUTRA and Reserves	61	13	13	(47)	-78%
Tuition Revenue Above Target	(2,422)	(1,964)	(1,857)	565	-23%
FY19 Labor Reserve	(1,814)	-	-	1,814	-100%
Total Campus Based Resources	103,953	110,798	109,544	5,591	5%
Centrally Administered Resources	53,589	55,609	53,645	56	0%
Total Resources (\$000)	157,543	166,407	163,189	5,646	4%
PS Regular	78,011	81,152	81,339	3,328	4%
Adjuncts	12,098	14,799	14,600	2,502	21%
Temporary Services	7,661	8,027	7,855	194	3%
Total PS	97,771	103,979	103,794	6,023	6%
OTPS	6,169	6,725	5,730	(438)	-7%
Total Campus Based Expenditures	103,940	110,704	109,524	5,585	5%
Centrally Administered Expenditures	53,589	55,609	53,645	56	0%
Total Expenditures (\$000)	157,529	166,313	163,169	5,640	4%
Fringes	42,937	46,069	42,900	(37)	0%
Energy	5,516	5,799	5,705	189	3%
Building Rentals	1,000	651	647	(353)	-35%
Financial Aid	4,137	3,090	4,392	256	6%
Total Centrally Administered Funds (\$000)	53,589	55,609	53,645	56	0%
Year-End Balance (\$000)	13	95	19	6	44%

	Prior Fall	Current Final Fall	Current Final Fall	Latest Quarter vs Prior Year Year [#]	Latest Quarter vs Prior Year Year [%]
Enrollment					
FTE	11,127	10,646	10,646	(481)	-4%
Headcount	13,247	12,783	12,783	(464)	-4%

	Prior Fall	Fall (October)	Spring (March)	Latest Quarter vs Prior Year Year [#]	Latest Quarter vs Prior Year Year [%]
Faculty Teaching	366	354	347	(19)	-5%
Faculty Support	177	174	177	-	0%
Academic Support	28	23	23	(5)	-18%
Student Services	110	101	94	(16)	-15%
Maintenance & Operations	110	96	101	(9)	-8%
General Administration	61	56	58	(3)	-5%
General Institutional Services	92	95	99	7	8%
SEEK/CD	9	8	7	(2)	-22%
Total Full-Time Staffing	953	907	906	(47)	-5%

The City University of New York
 2019-2020 Third Quarter Financial Report
 York College

	Prior Year Actuals	MY Projection	Q3 Projection	Latest Quarter vs Prior Year Year [\$]	Latest Quarter vs Prior Year Year [%]
Current Budget	59,156	66,024	65,377	6,221	11%
Prior Year CUTRA and Reserves	-	-	-	-	0%
Tuition Revenue Above Target	197	542	107	(90)	-46%
FY19 Labor Reserve	(1,023)	-	-	1,023	-100%
Total Campus Based Resources	58,330	66,566	65,484	7,154	12%
Centrally Administered Resources	29,410	31,929	29,979	568	2%
Total Resources (\$000)	87,741	98,496	95,463	7,722	9%
PS Regular	45,814	48,776	48,309	2,495	5%
Adjuncts	8,358	10,310	10,350	1,992	24%
Temporary Services	3,256	3,079	3,003	(253)	-8%
Total PS	57,428	62,165	61,662	4,234	7%
OTPS	2,866	4,250	3,711	845	29%
Total Campus Based Expenditures	60,294	66,415	65,373	5,079	8%
Centrally Administered Expenditures	29,410	31,929	29,979	568	2%
Total Expenditures (\$000)	89,704	98,344	95,352	5,647	6%
Fringes	25,250	27,543	25,486	237	1%
Energy	3,082	3,124	3,058	(24)	-1%
Building Rentals	-	-	-	-	0%
Financial Aid	1,078	1,263	1,434	356	33%
Total Centrally Administered Funds (\$000)	29,410	31,929	29,979	568	2%
Year-End Balance (\$000)	(1,963)	152	111	2,074	-106%

	Prior Fall	Current Final Fall	Current Final Fall	Latest Quarter vs Prior Year Year [#]	Latest Quarter vs Prior Year Year [%]
Enrollment					
FTE	6,094	6,101	6,101	7	0%
Headcount	8,693	8,337	8,337	(356)	-4%

	Prior Fall	Fall (October)	Spring (March)	Latest Quarter vs Prior Year Year [#]	Latest Quarter vs Prior Year Year [%]
Faculty Teaching	194	193	192	(2)	-1%
Faculty Support	72	69	66	(6)	-8%
Academic Support	24	20	19	(5)	-21%
Student Services	69	70	70	1	1%
Maintenance & Operations	67	66	65	(2)	-3%
General Administration	60	54	50	(10)	-17%
General Institutional Services	95	92	88	(7)	-7%
SEEK/CD	8	8	9	1	13%
Total Full-Time Staffing	589	572	559	(30)	-5%

The City University of New York
2019-2020 Third Quarter Financial Report
Graduate Center

	Prior Year Actuals	MY Projection	Q3 Projection	Latest Quarter vs Prior Year Year [\$]	Latest Quarter vs Prior Year Year [%]
Current Budget	138,422	140,280	142,755	4,333	3%
Prior Year CUTRA and Reserves	4,553	3,090	3,090	(1,463)	-32%
Tuition Revenue Above Target	1,289	1,170	1,050	(239)	-19%
FY19 Labor Reserve	(1,725)	-	-	1,725	-100%
Total Campus Based Resources	142,538	144,539	146,895	4,356	3%
Centrally Administered Resources	54,497	58,510	55,703	1,205	2%
Total Resources (\$000)	197,036	203,049	202,597	5,561	3%
PS Regular	77,442	85,376	85,143	7,701	10%
Adjuncts	924	921	959	35	4%
Temporary Services	19,807	20,342	20,939	1,132	6%
Total PS	98,173	106,639	107,041	8,868	9%
OTPS	41,275	36,348	38,000	(3,275)	-8%
Total Campus Based Expenditures	139,449	142,987	145,041	5,592	4%
Centrally Administered Expenditures	54,497	58,510	55,703	1,205	2%
Total Expenditures (\$000)	193,946	201,497	200,744	6,798	4%
Fringes	43,185	47,247	44,243	1,058	2%
Energy	2,234	2,263	2,210	(24)	-1%
Building Rentals	-	-	-	-	0%
Financial Aid	9,078	9,000	9,250	172	2%
Total Centrally Administered Funds (\$000)	54,497	58,510	55,703	1,205	2%
Year-End Balance (\$000)	3,090	1,552	1,854	(1,236)	-40%

	Prior Fall	Current Final Fall	Current Final Fall	Latest Quarter vs Prior Year Year [#]	Latest Quarter vs Prior Year Year [%]
Enrollment					
FTE	2,747	2,778	2,778	31	1%
Headcount	3,607	3,603	3,603	(4)	0%

	Prior Fall	Fall (October)	Spring (March)	Latest Quarter vs Prior Year Year [#]	Latest Quarter vs Prior Year Year [%]
Faculty Teaching	292	295	296	4	2%
Faculty Support	130	135	136	6	5%
Academic Support	133	162	164	31	23%
Student Services	69	71	73	4	6%
Maintenance & Operations	5	4	4	(1)	-20%
General Administration	43	49	48	5	12%
General Institutional Services	88	89	86	(2)	-2%
SEEK/CD	-	-	-	-	0%
Total Full-Time Staffing	760	805	807	47	6%

The City University of New York
 2019-2020 Third Quarter Financial Report
 CUNY School of Law

	Prior Year Actuals	MY Projection	Q3 Projection	Latest Quarter vs Prior Year Year [\$]	Latest Quarter vs Prior Year Year [%]
Current Budget	18,500	22,049	22,147	3,648	20%
Prior Year CUTRA and Reserves	2,971	2,273	2,273	(698)	-23%
Tuition Revenue Above Target	2,710	1,222	1,056	(1,655)	-61%
FY19 Labor Reserve	(172)	-	-	172	-100%
Total Campus Based Resources	24,009	25,544	25,476	1,467	6%
Centrally Administered Resources	12,520	14,183	13,834	1,314	10%
Total Resources (\$000)	36,528	39,727	39,310	2,781	8%
PS Regular	16,475	18,843	18,710	2,236	14%
Adjuncts	914	1,249	1,058	144	16%
Temporary Services	1,507	1,460	1,495	(13)	-1%
Total PS	18,896	21,551	21,263	2,367	13%
OTPS	2,839	2,854	2,754	(85)	-3%
Total Campus Based Expenditures	21,736	24,405	24,017	2,281	10%
Centrally Administered Expenditures	12,520	14,183	13,834	1,314	10%
Total Expenditures (\$000)	34,255	38,588	37,851	3,595	10%
Fringes	8,090	9,548	8,789	698	9%
Energy	-	-	-	-	0%
Building Rentals	4,409	4,635	5,008	599	14%
Financial Aid	20	-	37	17	85%
Total Centrally Administered Funds (\$000)	12,520	14,183	13,834	1,314	10%
Year-End Balance (\$000)	2,273	1,139	1,459	(814)	-36%

	Prior Fall	Current Final Fall	Current Final Fall	Latest Quarter vs Prior Year Year [#]	Latest Quarter vs Prior Year Year [%]
Enrollment					
FTE	630	670	670	40	6%
Headcount	583	626	626	43	7%

	Prior Fall	Fall (October)	Spring (March)	Latest Quarter vs Prior Year Year [#]	Latest Quarter vs Prior Year Year [%]
Faculty Teaching	47	53	57	10	21%
Faculty Support	6	2	2	(4)	-67%
Academic Support	5	6	5	-	0%
Student Services	22	25	27	5	23%
Maintenance & Operations	2	2	2	-	0%
General Administration	29	38	38	9	31%
General Institutional Services	28	30	30	2	7%
SEEK/CD	-	-	-	-	0%
Total Full-Time Staffing	139	156	161	22	16%

The City University of New York
 2019-2020 Third Quarter Financial Report
 Newmark School of Journalism

	Prior Year Actuals	MY Projection	Q3 Projection	Latest Quarter vs Prior Year Year [\$]	Latest Quarter vs Prior Year Year [%]
Current Budget	8,053	9,542	9,607	1,554	19%
Prior Year CUTRA and Reserves	1,101	1,109	1,109	8	1%
Tuition Revenue Above Target	1,055	50	(217)	(1,271)	-121%
FY19 Labor Reserve	(125)	-	-	125	-100%
Total Campus Based Resources	10,084	10,701	10,499	415	4%
Centrally Administered Resources	6,395	6,878	6,628	233	4%
Total Resources (\$000)	16,479	17,579	17,127	648	4%
PS Regular	6,283	6,348	6,425	142	2%
Adjuncts	1,262	1,422	1,387	125	10%
Temporary Services	390	645	604	214	55%
Total PS	7,935	8,415	8,416	481	6%
OTPS	1,040	1,292	1,391	350	34%
Total Campus Based Expenditures	8,975	9,706	9,806	831	9%
Centrally Administered Expenditures	6,395	6,878	6,628	233	4%
Total Expenditures (\$000)	15,370	16,584	16,434	1,064	7%
Fringes	3,571	3,728	3,478	(92)	-3%
Energy	-	-	-	-	0%
Building Rentals	2,821	3,150	3,145	324	11%
Financial Aid	3	-	4	1	35%
Total Centrally Administered Funds (\$000)	6,395	6,878	6,628	233	4%
Year-End Balance (\$000)	1,109	994	693	(416)	-38%

	Prior Fall	Current Final Fall	Current Final Fall	Latest Quarter vs Prior Year Year [#]	Latest Quarter vs Prior Year Year [%]
Enrollment					
FTE	279	282	282	3	1%
Headcount	230	232	232	2	1%

	Prior Fall	Fall (October)	Spring (March)	Latest Quarter vs Prior Year Year [#]	Latest Quarter vs Prior Year Year [%]
Faculty Teaching	17	15	16	(1)	-6%
Faculty Support	2	3	2	-	0%
Academic Support	2	3	2	-	0%
Student Services	8	8	8	-	0%
Maintenance & Operations	-	-	-	-	0%
General Administration	38	40	38	-	0%
General Institutional Services	6	2	3	(3)	-50%
SEEK/CD	-	-	-	-	0%
Total Full-Time Staffing	73	71	69	(4)	-5%

The City University of New York
 2019-2020 Third Quarter Financial Report
 School of Professional Studies

	Prior Year Actuals	MY Projection	Q3 Projection	Latest Quarter vs Prior Year Year [\$]	Latest Quarter vs Prior Year Year [%]
Current Budget	14,309	20,836	20,901	6,592	46%
Prior Year CUTRA and Reserves	4,865	8,592	8,592	3,727	77%
Tuition Revenue Above Target	7,126	1,978	1,491	(5,636)	-79%
FY19 Labor Reserve	(252)	-	-	252	-100%
Total Campus Based Resources	26,048	31,406	30,984	4,935	19%
Centrally Administered Resources	10,081	12,168	11,268	1,187	12%
Total Resources (\$000)	36,130	43,573	42,252	6,123	17%
PS Regular	10,087	12,922	12,540	2,453	24%
Adjuncts	3,975	4,982	5,144	1,169	29%
Temporary Services	1,049	1,298	952	(97)	-9%
Total PS	15,111	19,202	18,636	3,525	23%
OTPS	2,345	4,256	4,046	1,701	73%
Total Campus Based Expenditures	17,456	23,458	22,682	5,226	30%
Centrally Administered Expenditures	10,081	12,168	11,268	1,187	12%
Total Expenditures (\$000)	27,537	35,626	33,951	6,414	23%
Fringes	6,626	8,508	7,703	1,077	16%
Energy	170	172	168	(2)	-1%
Building Rentals	3,276	3,488	3,387	111	3%
Financial Aid	10	-	11	1	12%
Total Centrally Administered Funds (\$000)	10,081	12,168	11,268	1,187	12%
Year-End Balance (\$000)	8,592	7,947	8,301	(291)	-3%

	Prior Fall	Current Final Fall	Current Final Fall	Latest Quarter vs Prior Year Year [#]	Latest Quarter vs Prior Year Year [%]
Enrollment					
FTE	1,439	1,634	1,634	195	14%
Headcount	3,205	3,558	3,558	353	11%

	Prior Fall	Fall (October)	Spring (March)	Latest Quarter vs Prior Year Year [#]	Latest Quarter vs Prior Year Year [%]
Faculty Teaching	17	22	21	4	24%
Faculty Support	20	26	29	9	45%
Academic Support	-	-	-	-	0%
Student Services	30	34	35	5	17%
Maintenance & Operations	4	5	7	3	75%
General Administration	22	18	19	(3)	-14%
General Institutional Services	21	28	32	11	52%
SEEK/CD	-	-	-	-	0%
Total Full-Time Staffing	114	133	143	29	25%

The City University of New York
 2019-2020 Third Quarter Financial Report
 School of Public Health

	Prior Year Actuals	MY Projection	Q3 Projection	Latest Quarter vs Prior Year Year [\$]	Latest Quarter vs Prior Year Year [%]
Current Budget	11,191	12,355	12,517	1,326	12%
Prior Year CUTRA and Reserves	339	515	515	176	52%
Tuition Revenue Above Target	972	1,490	1,583	611	63%
FY19 Labor Reserve	(106)	-	-	106	-100%
Total Campus Based Resources	12,395	14,360	14,614	2,219	18%
Centrally Administered Resources	7,309	8,039	7,680	371	5%
Total Resources (\$000)	19,704	22,399	22,294	2,590	13%
PS Regular	10,281	11,733	11,622	1,342	13%
Adjuncts	256	316	415	160	62%
Temporary Services	642	702	697	55	9%
Total PS	11,178	12,752	12,735	1,557	14%
OTPS	702	900	651	(51)	-7%
Total Campus Based Expenditures	11,881	13,652	13,386	1,505	13%
Centrally Administered Expenditures	7,309	8,039	7,680	371	5%
Total Expenditures (\$000)	19,189	21,691	21,066	1,877	10%
Fringes	4,933	5,650	5,264	331	7%
Energy	-	-	-	-	0%
Building Rentals	2,376	2,389	2,417	41	2%
Financial Aid	-	-	-	-	0%
Total Centrally Administered Funds (\$000)	7,309	8,039	7,680	371	5%
Year-End Balance (\$000)	515	708	1,228	714	139%

	Prior Fall	Current Final Fall	Current Final Fall	Latest Quarter vs Prior Year Year [#]	Latest Quarter vs Prior Year Year [%]
Enrollment					
FTE	364	482	482	118	32%
Headcount	589	746	746	157	27%

	Prior Fall	Fall (October)	Spring (March)	Latest Quarter vs Prior Year Year [#]	Latest Quarter vs Prior Year Year [%]
Faculty Teaching	44	40	40	(4)	-9%
Faculty Support	2	4	4	2	100%
Academic Support	5	7	8	3	60%
Student Services	9	12	13	4	44%
Maintenance & Operations	2	3	5	3	150%
General Administration	27	30	32	5	19%
General Institutional Services	11	12	15	4	36%
SEEK/CD	-	-	-	-	0%
Total Full-Time Staffing	100	108	117	17	17%

The City University of New York
2019-2020 Third Quarter Financial Report
School of Labor

	Prior Year Actuals	MY Projection	Q3 Projection	Latest Quarter vs Prior Year Year [\$]	Latest Quarter vs Prior Year Year [%]
Current Budget	6,155	7,164	7,419	1,264	21%
Prior Year CUTRA and Reserves	400	712	712	312	78%
Tuition Revenue Above Target	72	(16)	(9)	(82)	-113%
FY19 Labor Reserve	(127)	-	-	127	-100%
Total Campus Based Resources	6,500	7,860	8,122	1,622	25%
Centrally Administered Resources	2,287	9,552	2,371	85	4%
Total Resources (\$000)	8,787	17,412	10,493	1,706	19%
PS Regular	3,940	4,848	4,573	633	16%
Adjuncts	407	216	362	(45)	-11%
Temporary Services	871	926	802	(70)	-8%
Total PS	5,219	5,990	5,736	518	10%
OTPS	569	1,450	1,463	894	157%
Total Campus Based Expenditures	5,788	7,440	7,199	1,411	24%
Centrally Administered Expenditures	2,287	9,552	2,371	85	4%
Total Expenditures (\$000)	8,075	16,992	9,571	1,496	19%
Fringes	2,287	2,654	2,371	85	4%
Energy	-	6,898	-	-	0%
Building Rentals	-	-	-	-	0%
Financial Aid	-	-	-	-	0%
Total Centrally Administered Funds (\$000)	2,287	9,552	2,371	85	4%
Year-End Balance (\$000)	712	420	922	210	30%

	Prior Fall	Current Final Fall	Current Final Fall	Latest Quarter vs Prior Year Year [#]	Latest Quarter vs Prior Year Year [%]
Enrollment					
FTE	150	136	136	(14)	-9%
Headcount	410	364	364	(46)	-11%

	Prior Fall	Fall (October)	Spring (March)	Latest Quarter vs Prior Year Year [#]	Latest Quarter vs Prior Year Year [%]
Faculty Teaching	6	6	8	2	33%
Faculty Support	2	6	6	4	200%
Academic Support	5	5	5	-	0%
Student Services	18	23	17	(1)	-6%
Maintenance & Operations	-	-	-	-	0%
General Administration	2	8	10	8	400%
General Institutional Services	8	5	5	(3)	-38%
SEEK/CD	-	-	-	-	0%
Total Full-Time Staffing	41	53	51	10	24%

The City University of New York
2019-2020 Third Quarter Financial Report
BMCC

	Prior Year Actuals	MY Projection	Q3 Projection	Latest Quarter vs Prior Year Year [\$]	Latest Quarter vs Prior Year Year [%]
Current Budget	182,179	190,190	186,888	4,709	3%
Prior Year CUTRA and Reserves	5,684	8,220	8,220	2,536	45%
Tuition Revenue Above Target	3,662	(3,300)	(6,179)	(9,841)	-269%
FY19 Labor Reserve	-	-	-	-	0%
Total Campus Based Resources	191,525	195,110	188,929	(2,596)	-1%
Centrally Administered Resources	75,486	75,738	78,162	2,676	4%
Total Resources (\$000)	267,010	270,848	267,090	80	0%
PS Regular	106,677	112,493	109,479	2,802	3%
Adjuncts	26,575	27,900	29,389	2,814	11%
Temporary Services	12,639	12,259	12,097	(542)	-4%
Total PS	145,891	152,652	150,965	5,074	3%
OTPS	37,414	38,043	33,837	(3,577)	-10%
Total Campus Based Expenditures	183,305	190,695	184,802	1,497	1%
Centrally Administered Expenditures	75,486	75,738	78,162	2,676	4%
Total Expenditures (\$000)	258,791	266,433	262,964	4,173	2%
Fringes	61,756	64,645	64,118	2,362	4%
Energy	5,841	5,841	5,841	-	0%
Building Rentals	-	-	-	-	0%
Financial Aid	7,889	5,252	8,203	314	4%
Total Centrally Administered Funds (\$000)	75,486	75,738	78,162	2,676	4%
Year-End Balance (\$000)	8,220	4,415	4,127	(4,093)	-50%

	Prior Fall	Current Final Fall	Current Final Fall	Latest Quarter vs Prior Year Year [#]	Latest Quarter vs Prior Year Year [%]
Enrollment					
FTE	19,884	19,680	19,680	(204)	-1%
Headcount	26,507	25,500	25,500	(1,007)	-4%

	Prior Fall	Fall (October)	Spring (March)	Latest Quarter vs Prior Year Year [#]	Latest Quarter vs Prior Year Year [%]
Faculty Teaching	576	574	580	4	1%
Faculty Support	176	177	178	2	1%
Academic Support	44	44	46	2	5%
Student Services	178	172	173	(5)	-3%
Maintenance & Operations	137	139	130	(7)	-5%
General Administration	78	76	78	-	0%
General Institutional Services	156	157	162	6	4%
SEEK/CD	7	8	8	1	14%
Total Full-Time Staffing	1,352	1,347	1,355	3	0%

The City University of New York
 2019-2020 Third Quarter Financial Report
 Bronx CC

	Prior Year Actuals	MY Projection	Q3 Projection	Latest Quarter vs Prior Year Year [\$]	Latest Quarter vs Prior Year Year [%]
Current Budget	97,316	95,026	93,422	(3,894)	-4%
Prior Year CUTRA and Reserves	1,312	290	290	(1,022)	-78%
Tuition Revenue Above Target	(3,435)	(1,834)	(3,052)	383	-11%
FY19 Labor Reserve	-	-	-	-	0%
Total Campus Based Resources	95,193	93,483	90,660	(4,533)	-5%
Centrally Administered Resources	45,397	42,013	44,339	(1,058)	-2%
Total Resources (\$000)	140,590	135,496	134,999	(5,591)	-4%
PS Regular	68,359	66,891	65,996	(2,363)	-3%
Adjuncts	11,192	10,942	11,430	238	2%
Temporary Services	5,536	5,326	5,426	(110)	-2%
Total PS	85,088	83,159	82,852	(2,236)	-3%
OTPS	9,815	9,238	7,577	(2,238)	-23%
Total Campus Based Expenditures	94,903	92,396	90,429	(4,474)	-5%
Centrally Administered Expenditures	45,397	42,013	44,339	(1,058)	-2%
Total Expenditures (\$000)	140,300	134,409	134,768	(5,532)	-4%
Fringes	36,065	35,216	35,189	(876)	-2%
Energy	3,132	3,132	3,132	-	0%
Building Rentals	-	-	-	-	0%
Financial Aid	6,201	3,665	6,018	(182)	-3%
Total Centrally Administered Funds (\$000)	45,397	42,013	44,339	(1,058)	-2%
Year-End Balance (\$000)	290	1,086	231	(59)	-20%

	Prior Fall	Current Final Fall	Current Final Fall	Latest Quarter vs Prior Year Year [#]	Latest Quarter vs Prior Year Year [%]
Enrollment					
FTE	7,514	7,025	7,025	(489)	-7%
Headcount	10,519	10,040	10,040	(479)	-5%

	Prior Fall	Fall (October)	Spring (March)	Latest Quarter vs Prior Year Year [#]	Latest Quarter vs Prior Year Year [%]
Faculty Teaching	313	302	290	(23)	-7%
Faculty Support	130	121	126	(4)	-3%
Academic Support	51	48	44	(7)	-14%
Student Services	100	100	101	1	1%
Maintenance & Operations	101	81	83	(18)	-18%
General Administration	75	69	60	(15)	-20%
General Institutional Services	127	118	116	(11)	-9%
SEEK/CD	6	6	6	-	0%
Total Full-Time Staffing	903	845	826	(77)	-9%

The City University of New York
 2019-2020 Third Quarter Financial Report
 Guttman CC

	Prior Year Actuals	MY Projection	Q3 Projection	Latest Quarter vs Prior Year Year [\$]	Latest Quarter vs Prior Year Year [%]
Current Budget	26,223	26,292	26,271	48	0%
Prior Year CUTRA and Reserves	-	91	91	91	0%
Tuition Revenue Above Target	47	742	358	311	667%
FY19 Labor Reserve	-	-	-	-	0%
Total Campus Based Resources	26,270	27,125	26,720	450	2%
Centrally Administered Resources	7,421	7,645	7,605	185	2%
Total Resources (\$000)	33,690	34,770	34,325	635	2%
PS Regular	14,290	14,360	14,317	27	0%
Adjuncts	965	1,122	1,000	35	4%
Temporary Services	1,661	1,849	1,870	209	13%
Total PS	16,916	17,330	17,187	271	2%
OTPS	9,262	9,262	9,525	263	3%
Total Campus Based Expenditures	26,179	26,592	26,712	533	2%
Centrally Administered Expenditures	7,421	7,645	7,605	185	2%
Total Expenditures (\$000)	33,599	34,237	34,317	718	2%
Fringes	7,115	7,339	7,300	185	3%
Energy	306	306	306	-	0%
Building Rentals	-	-	-	-	0%
Financial Aid	-	-	-	-	0%
Total Centrally Administered Funds (\$000)	7,421	7,645	7,605	185	2%
Year-End Balance (\$000)	91	533	8	(83)	-91%

	Prior Fall	Current Final Fall	Current Final Fall	Latest Quarter vs Prior Year Year [#]	Latest Quarter vs Prior Year Year [%]
Enrollment					
FTE	1,025	1,129	1,129	104	10%
Headcount	955	1,022	1,022	67	7%

	Prior Fall	Fall (October)	Spring (March)	Latest Quarter vs Prior Year Year [#]	Latest Quarter vs Prior Year Year [%]
Faculty Teaching	53	51	51	(2)	-4%
Faculty Support	4	7	5	1	25%
Academic Support	7	6	6	(1)	-14%
Student Services	43	41	40	(3)	-7%
Maintenance & Operations	3	3	3	-	0%
General Administration	32	26	27	(5)	-16%
General Institutional Services	23	24	23	-	0%
SEEK/CD	-	-	-	-	0%
Total Full-Time Staffing	165	158	155	(10)	-6%

The City University of New York
 2019-2020 Third Quarter Financial Report
 Hostos CC

	Prior Year Actuals	MY Projection	Q3 Projection	Latest Quarter vs Prior Year Year [\$]	Latest Quarter vs Prior Year Year [%]
Current Budget	69,917	69,404	68,112	(1,806)	-3%
Prior Year CUTRA and Reserves	2,558	3,526	3,526	968	38%
Tuition Revenue Above Target	712	(39)	(246)	(958)	-135%
FY19 Labor Reserve	-	-	-	-	0%
Total Campus Based Resources	73,187	72,891	71,392	(1,796)	-2%
Centrally Administered Resources	28,933	29,034	30,245	1,312	5%
Total Resources (\$000)	102,120	101,925	101,637	(483)	0%
PS Regular	48,222	48,362	49,015	793	2%
Adjuncts	6,841	7,255	7,167	327	5%
Temporary Services	3,774	4,214	4,476	702	19%
Total PS	58,836	59,831	60,658	1,822	3%
OTPS	10,825	9,755	8,058	(2,767)	-26%
Total Campus Based Expenditures	69,661	69,586	68,716	(945)	-1%
Centrally Administered Expenditures	28,933	29,034	30,245	1,312	5%
Total Expenditures (\$000)	98,594	98,620	98,961	367	0%
Fringes	24,625	25,337	25,763	1,138	5%
Energy	2,465	2,465	2,465	-	0%
Building Rentals	-	-	-	-	0%
Financial Aid	1,843	1,232	2,017	174	9%
Total Centrally Administered Funds (\$000)	28,933	29,034	30,245	1,312	5%
Year-End Balance (\$000)	3,526	3,305	2,676	(850)	-24%

	Prior Fall	Current Final Fall	Current Final Fall	Latest Quarter vs Prior Year Year [#]	Latest Quarter vs Prior Year Year [%]
Enrollment					
FTE	5,115	4,709	4,709	(406)	-8%
Headcount	7,331	7,120	7,120	(211)	-3%

	Prior Fall	Fall (October)	Spring (March)	Latest Quarter vs Prior Year Year [#]	Latest Quarter vs Prior Year Year [%]
Faculty Teaching	198	190	201	3	2%
Faculty Support	90	89	95	5	6%
Academic Support	27	27	30	3	11%
Student Services	96	89	102	6	6%
Maintenance & Operations	73	66	66	(7)	-10%
General Administration	56	50	57	1	2%
General Institutional Services	97	79	83	(14)	-14%
SEEK/CD	3	4	5	2	67%
Total Full-Time Staffing	640	594	639	(1)	0%

The City University of New York
 2019-2020 Third Quarter Financial Report
 Kingsborough CC

	Prior Year Actuals	MY Projection	Q3 Projection	Latest Quarter vs Prior Year Year [\$]	Latest Quarter vs Prior Year Year [%]
Current Budget	102,433	104,194	103,176	743	1%
Prior Year CUTRA and Reserves	2,838	1,526	1,526	(1,311)	-46%
Tuition Revenue Above Target	144	(505)	(3,333)	(3,477)	-2416%
FY19 Labor Reserve	-	-	-	-	0%
Total Campus Based Resources	105,415	105,215	101,370	(4,045)	-4%
Centrally Administered Resources	50,045	48,341	49,895	(150)	0%
Total Resources (\$000)	155,460	153,557	151,264	(4,195)	-3%
PS Regular	72,525	74,688	74,384	1,859	3%
Adjuncts	12,471	11,988	14,001	1,529	12%
Temporary Services	9,608	8,550	8,197	(1,410)	-15%
Total PS	94,603	95,226	96,582	1,978	2%
OTPS	9,285	9,103	7,462	(1,823)	-20%
Total Campus Based Expenditures	103,888	104,329	104,044	155	0%
Centrally Administered Expenditures	50,045	48,341	49,895	(150)	0%
Total Expenditures (\$000)	153,933	152,670	153,938	5	0%
Fringes	39,348	40,326	41,020	1,672	4%
Energy	5,028	5,028	5,028	-	0%
Building Rentals	-	-	-	-	0%
Financial Aid	5,669	2,987	3,847	(1,822)	-32%
Total Centrally Administered Funds (\$000)	50,045	48,341	49,895	(150)	0%
Year-End Balance (\$000)	1,526	886	(2,674)	(4,200)	-275%

	Prior Fall	Current Final Fall	Current Final Fall	Latest Quarter vs Prior Year Year [#]	Latest Quarter vs Prior Year Year [%]
Enrollment					
FTE	10,243	10,225	10,225	(18)	0%
Headcount	15,051	15,444	15,444	393	3%

	Prior Fall	Fall (October)	Spring (March)	Latest Quarter vs Prior Year Year [#]	Latest Quarter vs Prior Year Year [%]
Faculty Teaching	347	341	337	(10)	-3%
Faculty Support	143	162	164	21	15%
Academic Support	43	31	32	(11)	-26%
Student Services	100	90	90	(10)	-10%
Maintenance & Operations	111	120	118	7	6%
General Administration	68	66	64	(4)	-6%
General Institutional Services	109	98	102	(7)	-6%
SEEK/CD	7	7	7	-	0%
Total Full-Time Staffing	928	915	914	(14)	-2%

The City University of New York
 2019-2020 Third Quarter Financial Report
 LaGuardia CC

	Prior Year Actuals	MY Projection	Q3 Projection	Latest Quarter vs Prior Year Year [\$]	Latest Quarter vs Prior Year Year [%]
Current Budget	137,026	137,893	134,730	(2,297)	-2%
Prior Year CUTRA and Reserves	2,501	3,284	3,284	783	31%
Tuition Revenue Above Target	(2,109)	(1,395)	(3,535)	(1,426)	68%
FY19 Labor Reserve	-	-	-	-	0%
Total Campus Based Resources	137,418	139,781	134,479	(2,940)	-2%
Centrally Administered Resources	58,794	57,935	58,777	(17)	0%
Total Resources (\$000)	196,212	197,716	193,256	(2,957)	-2%
PS Regular	87,436	90,730	89,259	1,823	2%
Adjuncts	20,496	19,833	21,296	801	4%
Temporary Services	7,794	8,935	7,867	73	1%
Total PS	115,725	119,498	118,422	2,698	2%
OTPS	18,409	19,055	14,287	(4,122)	-22%
Total Campus Based Expenditures	134,134	138,552	132,709	(1,425)	-1%
Centrally Administered Expenditures	58,794	57,935	58,777	(17)	0%
Total Expenditures (\$000)	192,928	196,487	191,487	(1,442)	-1%
Fringes	48,689	50,605	50,296	1,608	3%
Energy	3,675	3,675	3,675	-	0%
Building Rentals	-	-	-	-	0%
Financial Aid	6,430	3,654	4,806	(1,624)	-25%
Total Centrally Administered Funds (\$000)	58,794	57,935	58,777	(17)	0%
Year-End Balance (\$000)	3,284	1,229	1,769	(1,515)	-46%

	Prior Fall	Current Final Fall	Current Final Fall	Latest Quarter vs Prior Year Year [#]	Latest Quarter vs Prior Year Year [%]
Enrollment					
FTE	13,913	13,152	13,152	(761)	-5%
Headcount	19,300	18,555	18,555	(745)	-4%

	Prior Fall	Fall (October)	Spring (March)	Latest Quarter vs Prior Year Year [#]	Latest Quarter vs Prior Year Year [%]
Faculty Teaching	364	359	357	(7)	-2%
Faculty Support	114	114	112	(2)	-2%
Academic Support	122	110	105	(17)	-14%
Student Services	189	191	187	(2)	-1%
Maintenance & Operations	57	50	50	(7)	-12%
General Administration	86	87	87	1	1%
General Institutional Services	181	176	169	(12)	-7%
SEEK/CD	6	7	7	1	17%
Total Full-Time Staffing	1,119	1,094	1,074	(45)	-4%

The City University of New York
 2019-2020 Third Quarter Financial Report
 Queensborough CC

	Prior Year Actuals	MY Projection	Q3 Projection	Latest Quarter vs Prior Year Year [\$]	Latest Quarter vs Prior Year Year [%]
Current Budget	114,632	110,546	108,863	(5,769)	-5%
Prior Year CUTRA and Reserves	3,564	3,433	3,433	(131)	-4%
Tuition Revenue Above Target	(2,049)	691	(1,220)	829	-40%
FY19 Labor Reserve	-	-	-	-	0%
Total Campus Based Resources	116,147	114,670	111,077	(5,071)	-4%
Centrally Administered Resources	51,495	50,037	51,682	188	0%
Total Resources (\$000)	167,642	164,708	162,759	(4,883)	-3%
PS Regular	82,681	84,370	82,805	124	0%
Adjuncts	12,657	14,473	13,564	907	7%
Temporary Services	7,120	4,611	6,274	(846)	-12%
Total PS	102,458	103,453	102,643	185	0%
OTPS	10,256	9,772	7,234	(3,022)	-29%
Total Campus Based Expenditures	112,714	113,225	109,877	(2,837)	-3%
Centrally Administered Expenditures	51,495	50,037	51,682	188	0%
Total Expenditures (\$000)	164,209	163,263	161,559	(2,649)	-2%
Fringes	43,515	43,810	43,594	80	0%
Energy	3,384	3,384	3,384	-	0%
Building Rentals	-	-	-	-	0%
Financial Aid	4,596	2,843	4,704	108	2%
Total Centrally Administered Funds (\$000)	51,495	50,037	51,682	188	0%
Year-End Balance (\$000)	3,433	1,445	1,200	(2,234)	-65%

	Prior Fall	Current Final Fall	Current Final Fall	Latest Quarter vs Prior Year Year [#]	Latest Quarter vs Prior Year Year [%]
Enrollment					
FTE	10,674	9,813	9,813	(861)	-8%
Headcount	15,411	14,035	14,035	(1,376)	-9%

	Prior Fall	Fall (October)	Spring (March)	Latest Quarter vs Prior Year Year [#]	Latest Quarter vs Prior Year Year [%]
Faculty Teaching	419	407	409	(10)	-2%
Faculty Support	183	178	176	(7)	-4%
Academic Support	34	31	30	(4)	-12%
Student Services	121	117	111	(10)	-8%
Maintenance & Operations	100	94	91	(9)	-9%
General Administration	58	48	52	(6)	-10%
General Institutional Services	111	111	111	-	0%
SEEK/CD	5	5	6	1	20%
Total Full-Time Staffing	1,031	991	986	(45)	-4%